

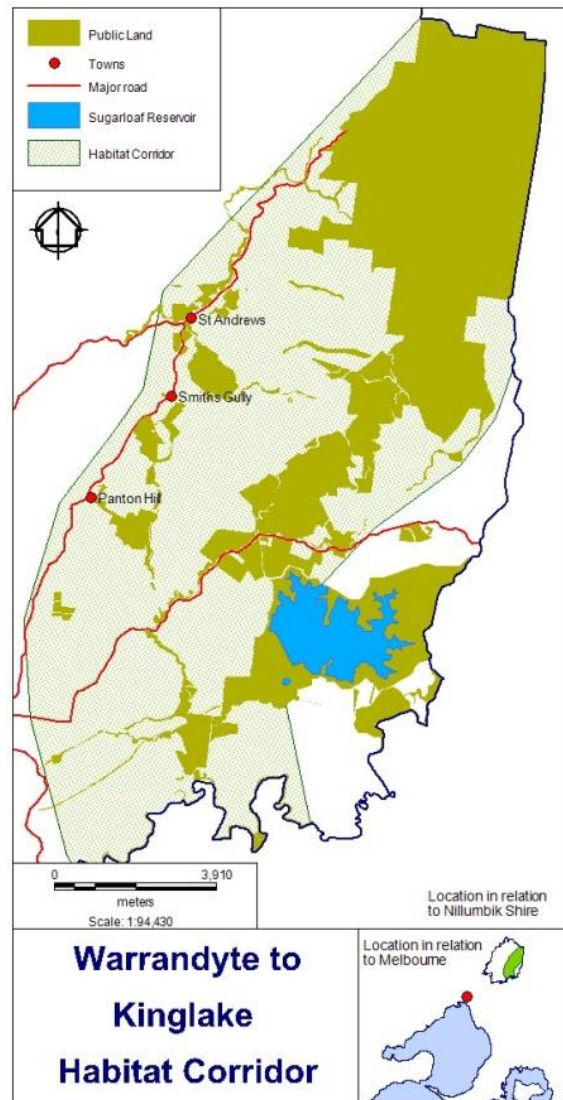
Rivers to Ranges

Environmental Works Toolkit

Training



Revised
24 January 2018



Acknowledgements

This document is part of the Environmental Works Toolkit. The Toolkit was developed by the *Warrandyte to Kinglake Habitat Corridor Network* (now *Rivers to Ranges Network*) enabled by State Government funding. The Toolkit is free to use and adapt. If you do please acknowledge the *Rivers to Ranges Network* and the project partners (Nillumbik Shire Council, Parks Victoria, Melbourne Water and the Department of Environment, Land, Water and Planning).

Further information

For further information on the Rivers to Ranges Project or the Environmental Works Toolkit, visit the Nillumbik Shire Council Website at www.nillumbik.vic.gov.au or contact the project coordinator, Stacey Warmuth at Nillumbik Shire Council on 9433 3184 or stacey.warmuth@nillumbik.vic.gov.au.

Disclaimer

This material may be of assistance to you but Nillumbik Shire Council and its employees and the State of Victoria and its employees do not guarantee that the publication is without flaw of any kind or is wholly appropriate for your particular purposes and therefore disclaims all liability for any error, loss or consequences which may arise from your relying on any information contained in this material.



Table of contents

1	Contractor training	4
1.1	Resources required	4
1.2	Training contents	4
2	Community weed mapping and monitoring.....	5
2.1	Copy format	5
	Leaflet blurb – 17 words	5
	Web blurb – 37 words.....	5
2.2	Resources.....	5
2.3	Location	5
2.4	Session plan	5



1 Contractor training

Following are components to include when training contractors in how to follow the Environmental Works contractor reporting procedure. Learning is more effective when the system is presented to all contractors followed up with one-on-one, on-site training with a laptop.

1.1 Resources required

- PowerPoint presentation (contact for an example)
- Environmental Works Contractor Reporting Procedure
- Example works plan printout
- Example electronic works plan

1.2 Training contents

- Overview
 - Process
 - Resources
 - Expectations
 - Data collection, acceptable formats
 - Providing data to Council or Parks Victoria
- Works plan
 - How to complete
- Weed mapping
 - What is an infestation?
 - How to define its boundaries?
 - Mapping fields
 - How to assess extent?
 - How to assess cover?
- Weed control mapping
 - When to create a new record
 - Weed control fields



2 Community weed mapping and monitoring

2.1 Copy format

Leaflet blurb – 17 words

This practical session will show you how to map environmental weeds, plan works and monitor the results.

Web blurb – 37 words

Controlling environmental weeds is rarely simple: you may need to control multiple weed species, over several years, with a limited budget. This practical session will show you how to map weeds, plan works and monitor the results.

Date: Sunday 13 September

Time: 10am–1pm

Cost: Free

Facilitator:

Venue: (Melway ref)

Bookings:

Max number of participants: 12

2.2 Resources

- Environmental Works planning, mapping and monitoring – a guide for community groups and private landholders (in development – contact for an early version)
- Weed Recording sheet
- Works Plan Template (print out of an example Works Plan)

2.3 Location

A indoors space with tables and chairs, and easy access to bushland with a variety of weeds.

2.4 Session plan

Time	Duration	Topics
10am	20min	Welcome <ul style="list-style-type: none">▪ Toilets, tea, coffee, OH&S▪ Overview day and materials▪ Introductions<ul style="list-style-type: none">▪ Who you are▪ What scale are you doing weed control▪ Why you've come here today / what you want out of this workshop



Time	Duration	Topics
10:20am	25min	Overview of weed system and how to use manual <ul style="list-style-type: none"> ▪ Plan, do, review cycle (pg.5) ▪ Quick reference guide (pg.7) ▪ Principles of weed management (pg.11)
10:45am	10min	Map areas to protect from weeds (pg.13) <ul style="list-style-type: none"> ▪ Why do we want to control weeds? ▪ What are the things we are protecting? ▪ Weed management areas
10:55am	5min	Break
11:00am	1hr	Weed mapping <ul style="list-style-type: none"> ▪ Why map weeds? ▪ Consistency in mapping ▪ Tools for mapping ▪ Mapping outside <ul style="list-style-type: none"> ▪ Which weeds to map ▪ What to map ▪ Weed fronts ▪ Source and satellite infestations ▪ Threatening processes ▪ When and how to map ▪ Data fields ▪ Map some weeds
12:00am	10min	Break
12:10am	30min	Planning weed control <ul style="list-style-type: none"> ▪ Why plan? ▪ Identify weeds and threats - High threat/other/watchlist/threatening processes ▪ Staggering works/prioritising ▪ Setting goals and actions ▪ Reporting
12:40am	15min	Extra as required <ul style="list-style-type: none"> ▪ Indicators of success (pg.32) ▪ Photopoint monitoring (pg. 27) ▪ GIS/GPS
12:55am	5min	Wrap up and close
1pm		Finish

This session can be followed up with a practical session where participants can create a works plan for their community group or block of land.

