

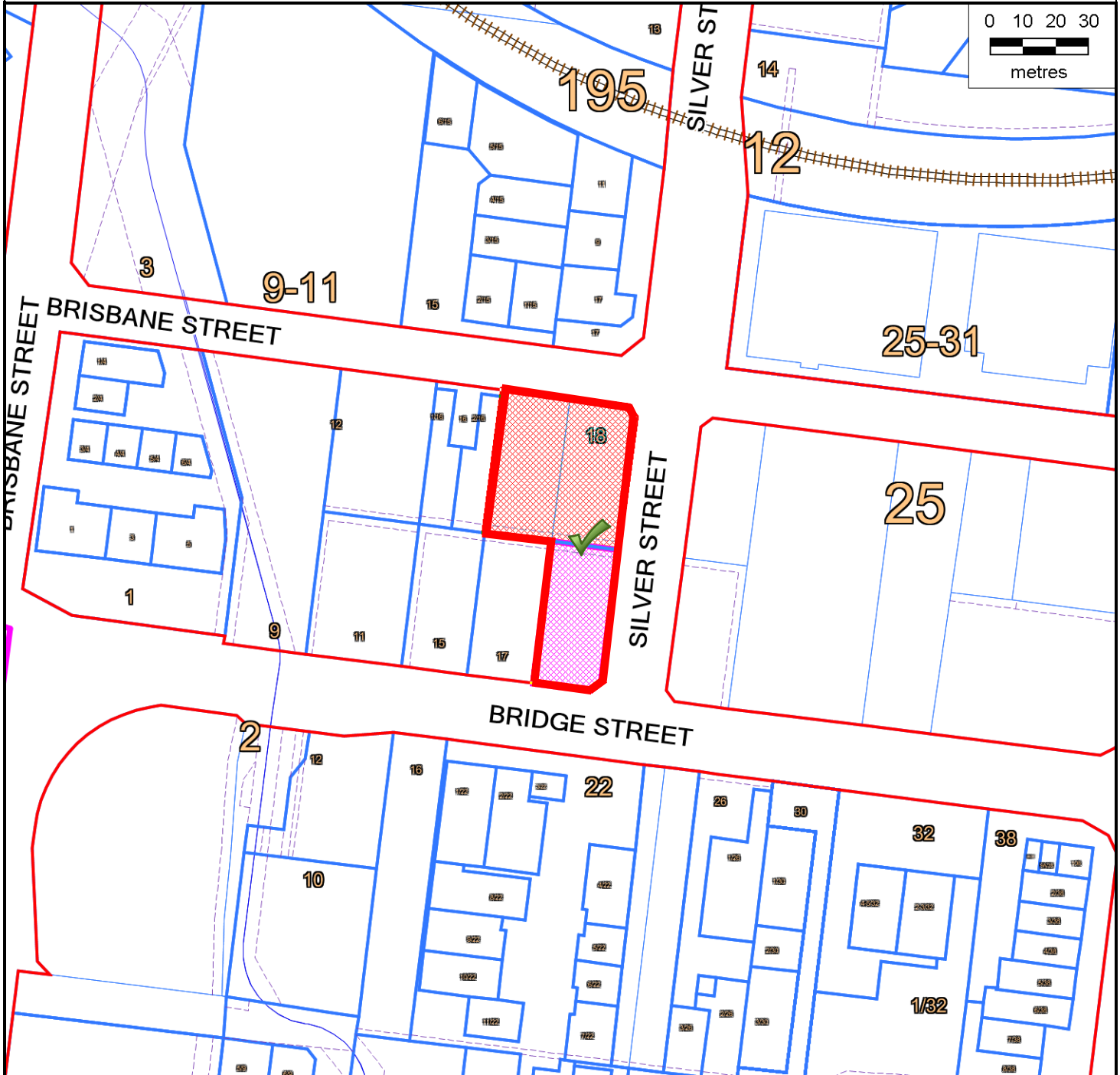
Subject Site and Surrounds

Subject Site: 18 Brisbane Street, 19 Bridge Street and 19A Bridge Street, Eltham

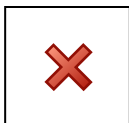
File Reference: B106/00/018P

Application Number: 281/2019/11AP/A

Melway's Reference: 21H6



Subject Site



Objectors

Nearby Objectors: 0

Total: 0



This material may be of assistance to you, but the State of Victoria and its employees together with Nillumbik Shire Council and its employees, do not guarantee that the publication is without flaw of any kind or is wholly appropriate for your particular purposes and therefore disclaims all liability for any error, loss or consequences which may arise from you relying on any information contained in this material.



Contains Vicmap information.
© The State of Victoria, Department of Environment, Land Water & Planning 2018.

Reproduced by permission of the Department of Environment, Land Water & Planning.

© Nillumbik Shire Council 2018

Map Width:	335.1 m
Produced By:	Planning and Building Services
Responsible Officer:	Karen McPherson
Date:	Monday, 20 July 2020





This material may be of assistance to you, but the State of Victoria and its employees together with Nillumbik Shire Council and its employees, do not guarantee that the publication is without flaw of any kind or is wholly appropriate for your particular purposes and therefore disclaims all liability for any error, loss or consequences which may arise from you relying on any information contained in this material.

© Nillumbik Shire Council 2018.

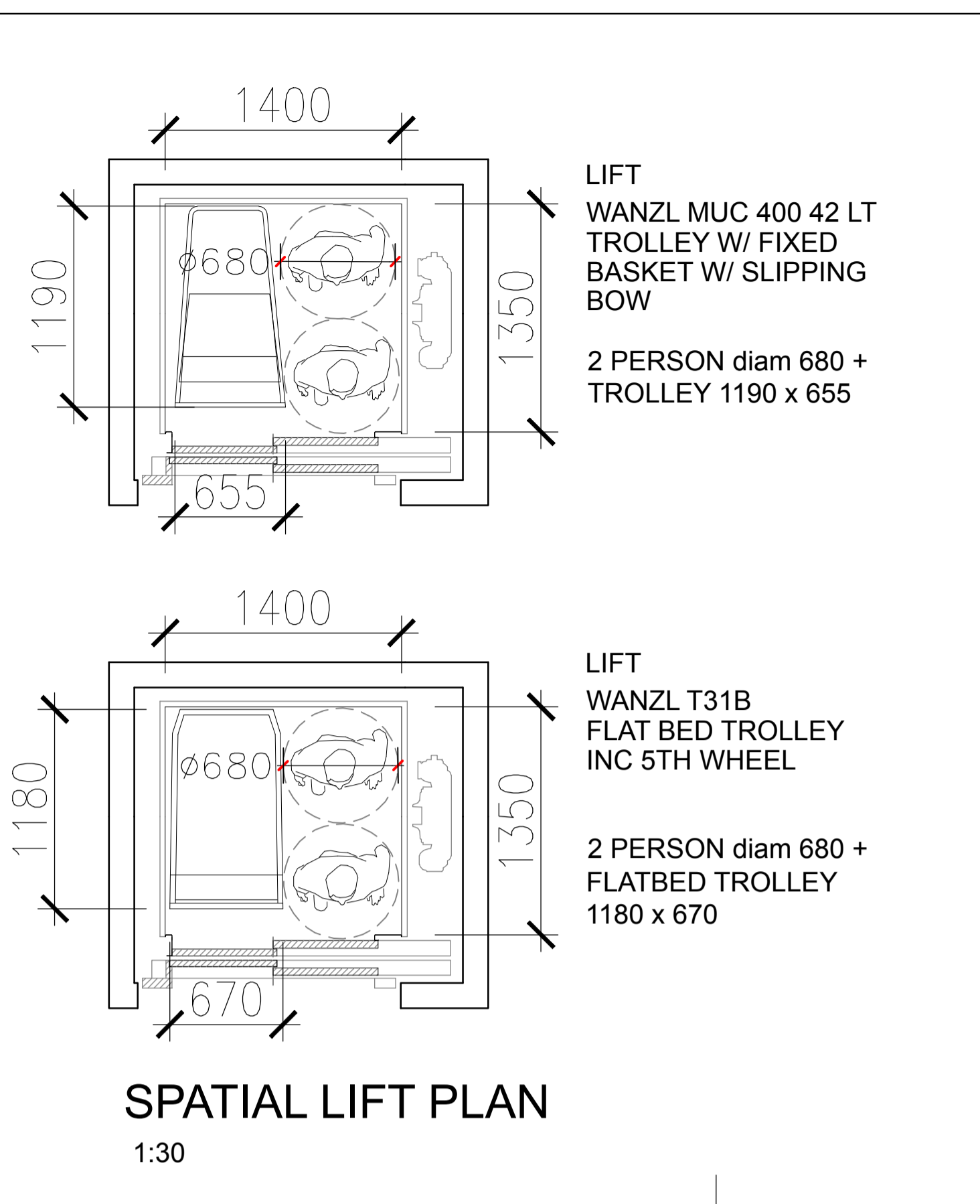
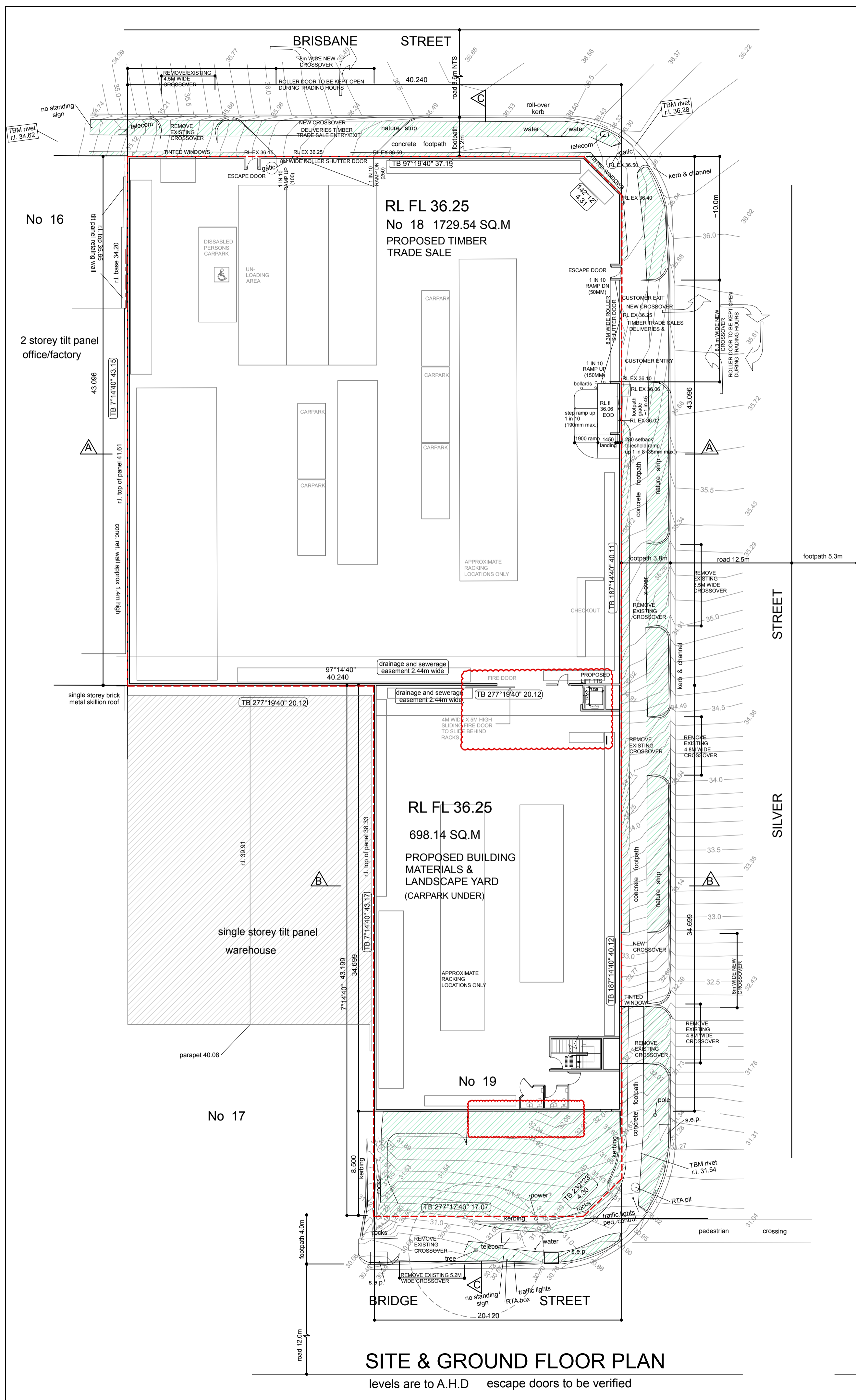
Map Width: 142.1 m

Date: Monday, 20 July 2020

Reproduced with permission from the Department of Environment, Land, Water & Planning.

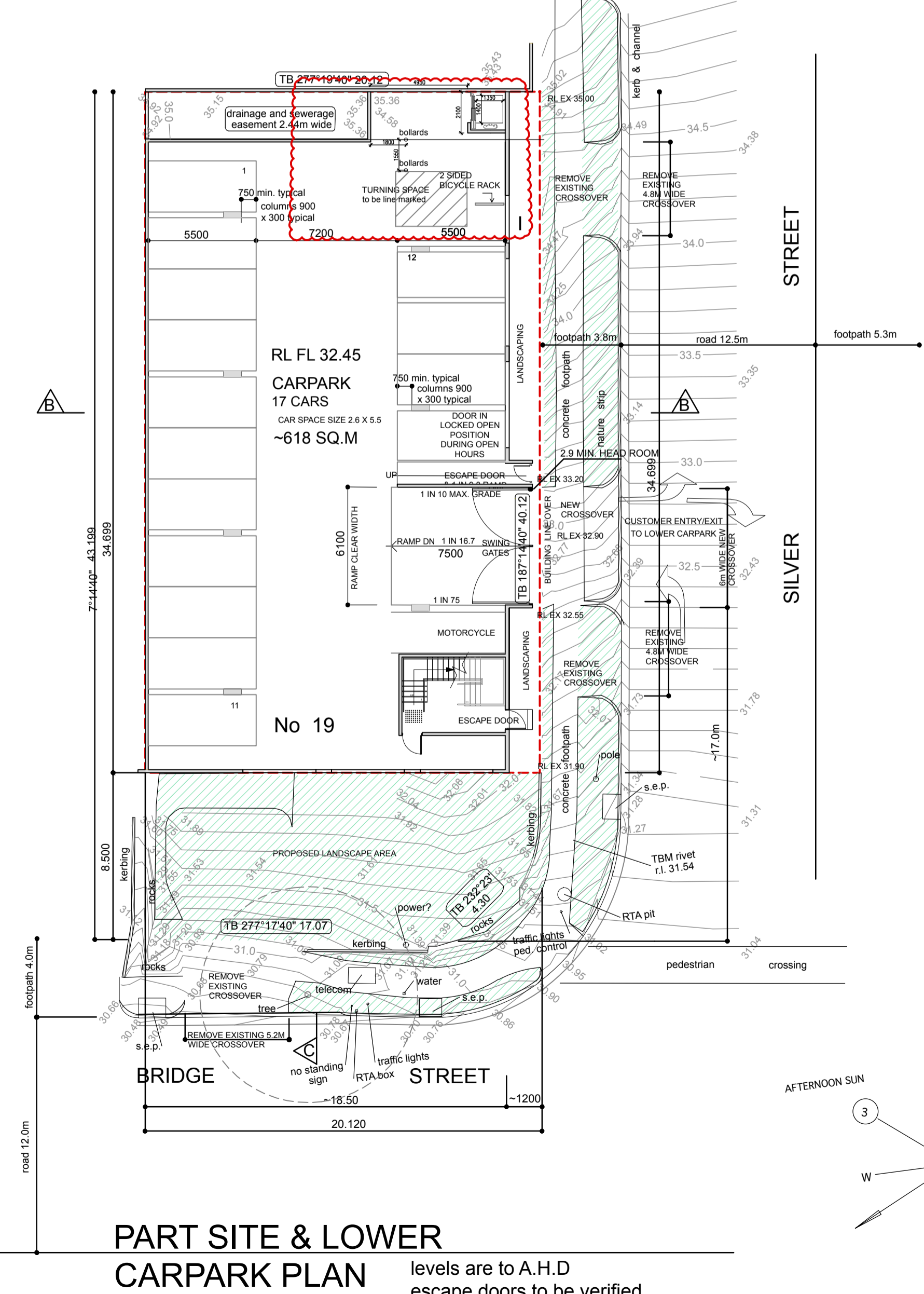


Contains Vicmap information.
© The State of Victoria, Department of Environment, Land, Water & Planning 2018.



LIFT SPECIFICATION

4.3 Mezzanine Lift	To be determined
Number of Public Passenger Lifts:	750 kg (10-passenger) nominal.
Rated Load:	1.0 m/s
Rated Speed:	Gearless, Machine Room Less (MRL)
Machine Type:	Variable Voltage, Variable Frequency
Drive System:	Microprocessor based group control.
Control System:	Adjacent to the landing doors at the uppermost level.
Control Cabinet Location:	Travel:
Travel:	TBD
Levels Served:	No. of Lift well Openings:
No. of Lift well Openings:	Type of Car and Lift well Entrances:
Type of Car and Lift well Entrances:	Landing Door Jamb Finish:
Landing Door Jamb Finish:	Landing Door Jamb Type:
Landing Door Jamb Type:	Car Door Finish:
Car Door Finish:	Clear Door Opening:
Clear Door Opening:	Car Door Passenger Protection:
Car Door Passenger Protection:	Clear Car Inside:
Clear Car Inside:	Car Interior Finishes:
Car Interior Finishes:	Car Finishes:
Car Finishes:	Floor:
Floor:	Side Wall Panels:
Side Wall Panels:	Rear Wall Panel:
Rear Wall Panel:	Ceiling:
Ceiling:	Lighting:
Lighting:	Handrails:
Handrails:	Clear Height Inside Car:
Clear Height Inside Car:	Approximate Lift well Dimensions:
Approximate Lift well Dimensions:	Approximate Pit Depth:
Approximate Pit Depth:	Approximate Top Overrun (Headroom):
Approximate Top Overrun (Headroom):	Type of Car and Landing Buttons:
Type of Car and Landing Buttons:	Heil Lanters:
Heil Lanters:	Facilities for Persons with Disabilities:
Facilities for Persons with Disabilities:	Landing Button Ropes:
Landing Button Ropes:	Car Operating Panels:
Car Operating Panels:	Car Position Indicator:
Car Position Indicator:	Fire Service:
Fire Service:	Security/Restricted Access:
Security/Restricted Access:	Emergency Communication:
Emergency Communication:	Guide Shoe Type:
Guide Shoe Type:	Designated Emergency Lifts:
Designated Emergency Lifts:	Features:
Features:	Low Level Security interface
Low Level Security interface:	CCTV Provision
CCTV Provision:	Lift Car Music Speakers
Lift Car Music Speakers:	



TITLE BOUNDARY

ADJOINING BUILDINGS

PROPOSED CARPARKING & EXTERNAL PAVEMENT

INTERNAL & EXTERNAL LANDSCAPE AREAS

APPROXIMATE RACKING LOCATIONS ONLY

DEVELOPMENT SUMMERY

PROPOSED DEVELOPMENT AT
18 BRISBANE ST & 19 BRIDGE ST ELTHAM

SITE AREAS
18 BRISBANE ST 1731.7 SQ.M.
19 BRIDGE ST 863.8 SQ.M.
OVER ALL 2595.9 SQ.M.
SITE AREA 2595.9 SQ.M

PROPOSED TIMBER TRADE SALE 1729.6 SQ.M

DRAWING SCHEDULE BCM

TP1	AERIAL PLAN
TP2	EXISTING SITE/DEMOLITION & SITE CONTEXT PLANS
TP3	PROPOSED SITE AND FLOOR PLANS
TP4	PROPOSED ELEVATIONS
TP5	SIGNAGE DETAILS

IMPORTANT NOTES:

- THIS DRAWING IS NOT TO BE SCALED, FIGURED DIMENSIONS ARE TO TAKE PRECEDENCE.
- FOR ALL REINFORCED CONCRETE, STRUCTURAL STEEL, MECHANICAL, ELECTRICAL, HYDRAULICS, ETC. DETAILS, REFER TO CONSULTANTS.
- IT IS THE BUILDERS AND ALL SUB-CONTRACTORS RESPONSIBILITY TO CHECK ALL DIMENSIONS AND LEVELS BY ACTUAL MEASUREMENT ON SITE, PRIOR TO COMMENCEMENT OF FABRICATION AND/OR ORDERING OF BUILDING COMPONENTS.

ISSUE	DATE	AMENDMENT
I	03/8/20	LIFT ADDED PER PLANNING REQUIREMENT FIRE DOOR ALTERED
H	11/3/20	STAIR FROM CARPARK TO STORE. ADDITIONAL CAR IN IN TIMBER TRADE SALES AREA. SLIDE GATE CHANGED
G	29/1/20	TROLLEY BAY REMOVED FROM CARPARK
F	6/9/19	TOWN PLANNING REQUIREMENTS. WINDOWS ADDED
E	14/8/19	TOWN PLANNING REQUIREMENTS. EXTERNAL CARSPACES REMOVED. WINDOWS ADDED TO SE CNR OF BUILDING AT GROUND FLOOR LEVEL. APPROXIMATE RACKING PLAN. PEDESTRIAN ENTRY
D	18/6/19	PERMIT SUBMISSION
C	4/6/19	PLANNING CONSULTANTS REQUIREMENTS
B	3/6/19	PLANNING CONSULTANTS REQUIREMENTS
A	15/5/19	PLANNING CONSULTANTS REQUIREMENTS

BLAND CONNARD MENZIES

PROJECT DESIGNERS
B. C. M. DESIGNS PTY. LTD. A.B.N. 64 006 533 491

1 VAUGHAN STREET, RICHMOND, VIC 3121.
PHONE: (03)9427 0600
FAX: (03)9427 0742
EMAIL: bcm@netspace.net.au

PROPOSED BUNNINGS
TIMBER TRADE STORE STORE NO 6037
AT : No 18 BRISBANE ST & No 19 BRIDGE ST (AT CNR'S OF SILVER ST) ELTHAM

DESIGNED : A.M.	JOB NO. :	DATE : MAY 20	SCALES : 1:200, 1: 100	DRAWING NO. :
DRAWN : J.D.	CHECKED :		DRAWING SIZE : A1	TP3