

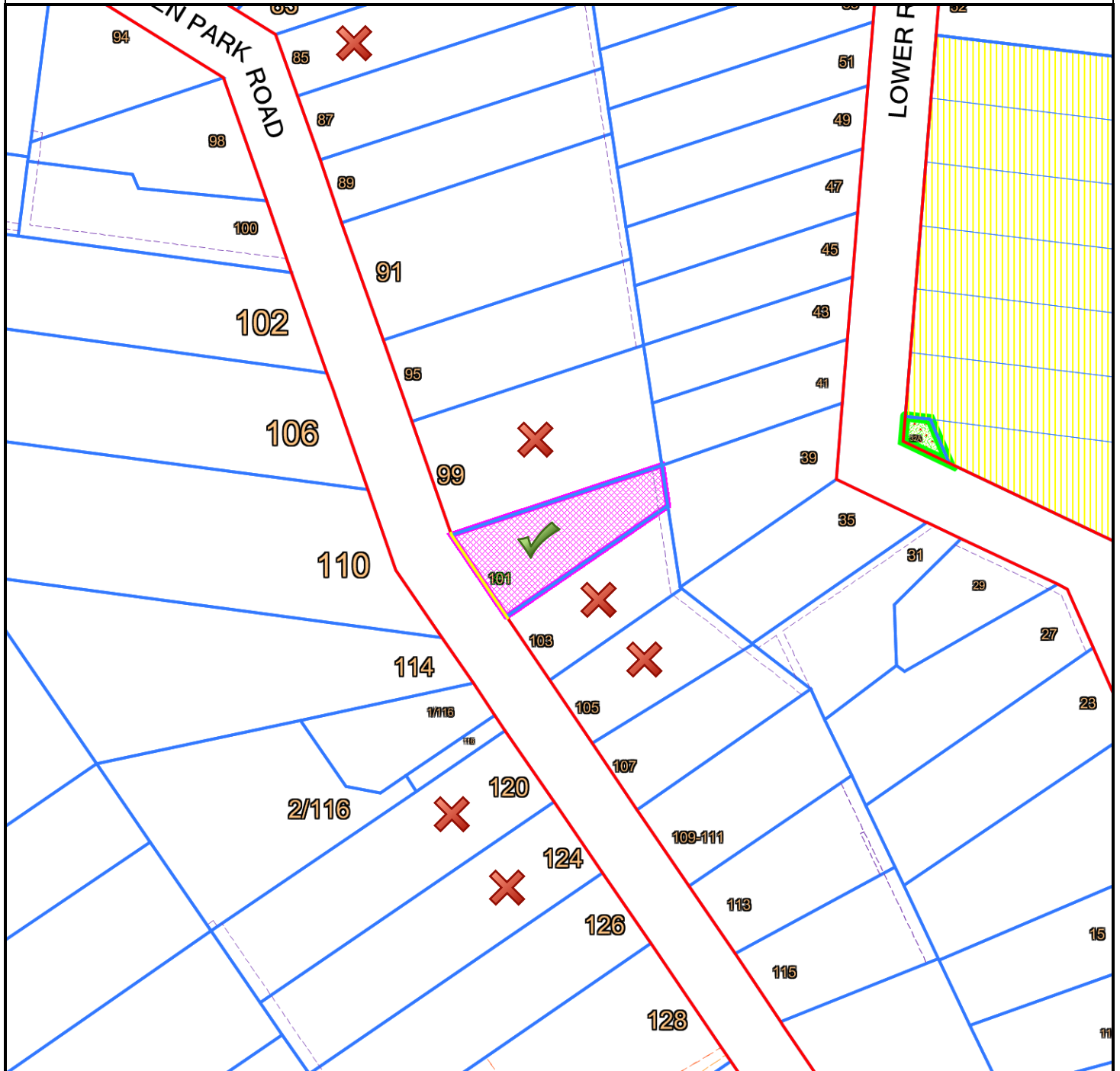
Subject Site and Surrounds

Subject Site: 101 Glen Park Road, Eltham North

File Reference: G023/00/101P

Application Number: 274/2018/05P

Melway's Reference: 21KI



Subject Site



Objectors

Nearby Objectors: 6

Total: 6



This material may be of assistance to you, but the State of Victoria and its employees together with Nillumbik Shire Council and its employees, do not guarantee that the publication is without flaw of any kind or is wholly appropriate for your particular purposes and therefore disclaims all liability for any error, loss or consequences which may arise from you relying on any information contained in this material.



Contains Vicmap information.
© The State of Victoria, Department of Environment, Land Water & Planning 2018.

Reproduced by permission of the Department of Environment, Land Water & Planning.

© Nillumbik Shire Council 2018

Map Width:	265.8 m
Produced By:	Planning and Building Services
Responsible Officer:	Briana Barnes
Date:	Thursday, 25 October 2018

