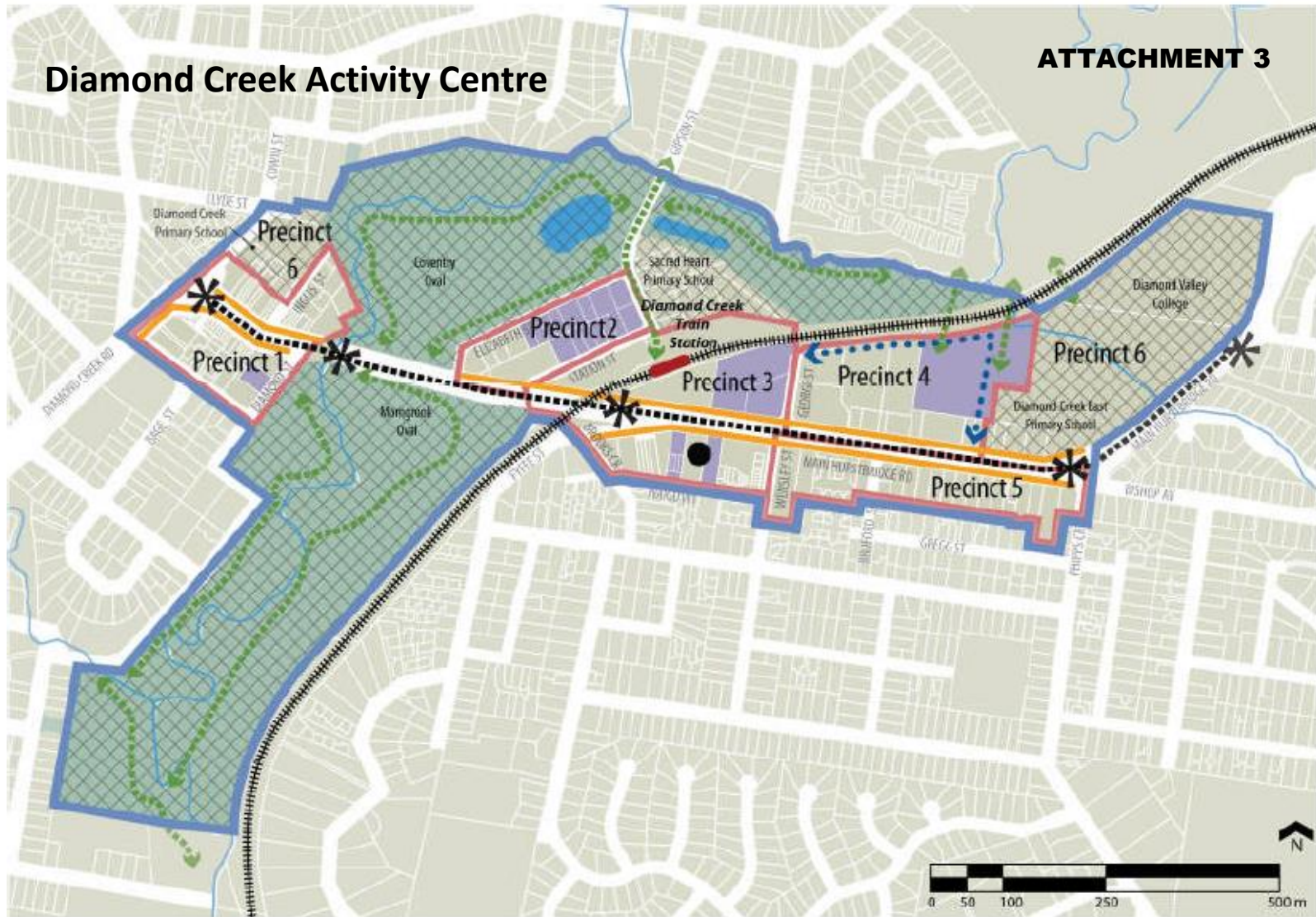


# Diamond Creek Activity Centre

ATTACHMENT 3



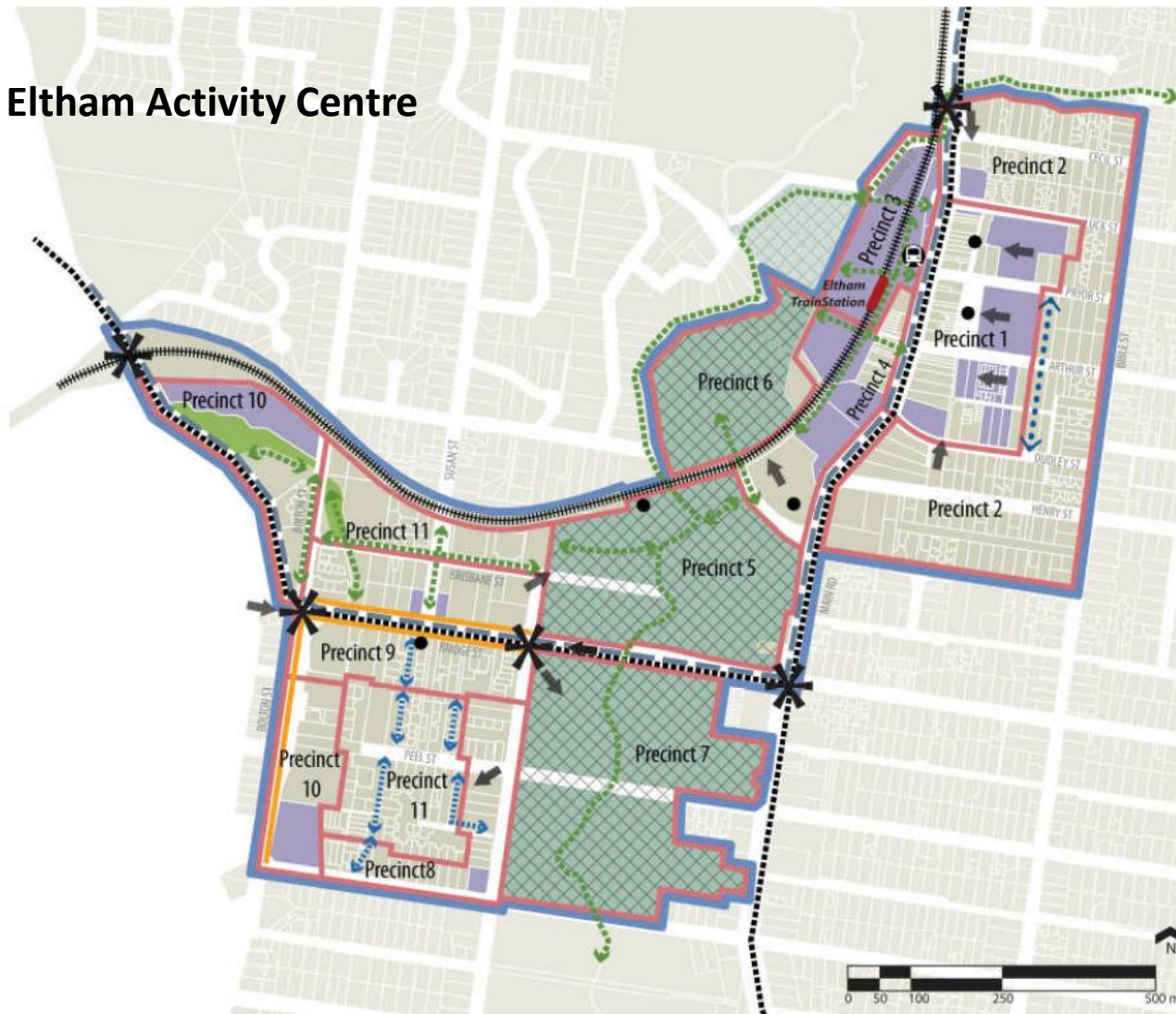
- Precinct 1** Chute Street Secondary Retail Node
- Precinct 2** Elizabeth Street & Station Street Industrial Area
- Precinct 3** Retail Core
- Precinct 4** Employment/ Industrial
- Precinct 5** Mixed Use Area
- Precinct 6** Schools & Recreation Area  
*Not Included Within the Activity Centre Zone*

- Activity Centre Boundary
- Precinct Boundary
- Land Included in Precincts
- Existing Open Space
- Areas Excluded from Activity Centre Zone
- Train Station
- Existing Train Route

- Key Development Site in Precincts
- Main Road Network
- Potential New Road Link
- Potential New Boulevard Treatment
- Enhanced Connections
- Entry / Gateways
- Focal Point



# Eltham Activity Centre



- Precinct 1** Commercial Core
- Precinct 2** Residential Interface/  
Medium Density Housing
- Precinct 3** Transport Hub
- Precinct 4** Town Centre
- Precinct 5** Town Park  
*Not Included Within Activity Centre Zone*
- Precinct 6** Sporting Oval  
*Not Included Within Activity Centre Zone*
- Precinct 7** Pitt Street Parkland  
*Not Included Within Activity Centre Zone*
- Precinct 8** Office / Recreation / Employment
- Precinct 9** Peripheral Sales
- Precinct 10** Sherbourne Road / Bolton Street  
Medium Density Housing
- Precinct 11** Industrial Core

- Activity Centre Boundary
- Precinct Boundary
- Land Included in Precincts
- Existing Open Space
- Areas Excluded from Activity Centre Zone
- Train Station
- Existing Train Route
- Bus Route

- Key Development Site in Precincts
- Main Road Network
- Circulatory Road
- Potential New Boulevard Treatment
- Enhanced Connections
- Potential Vehicle and Pedestrian Connections
- Green Corridor
- Entry / Gateways
- Focal Point
- View Lines
- Focus for Updated Transport Node

