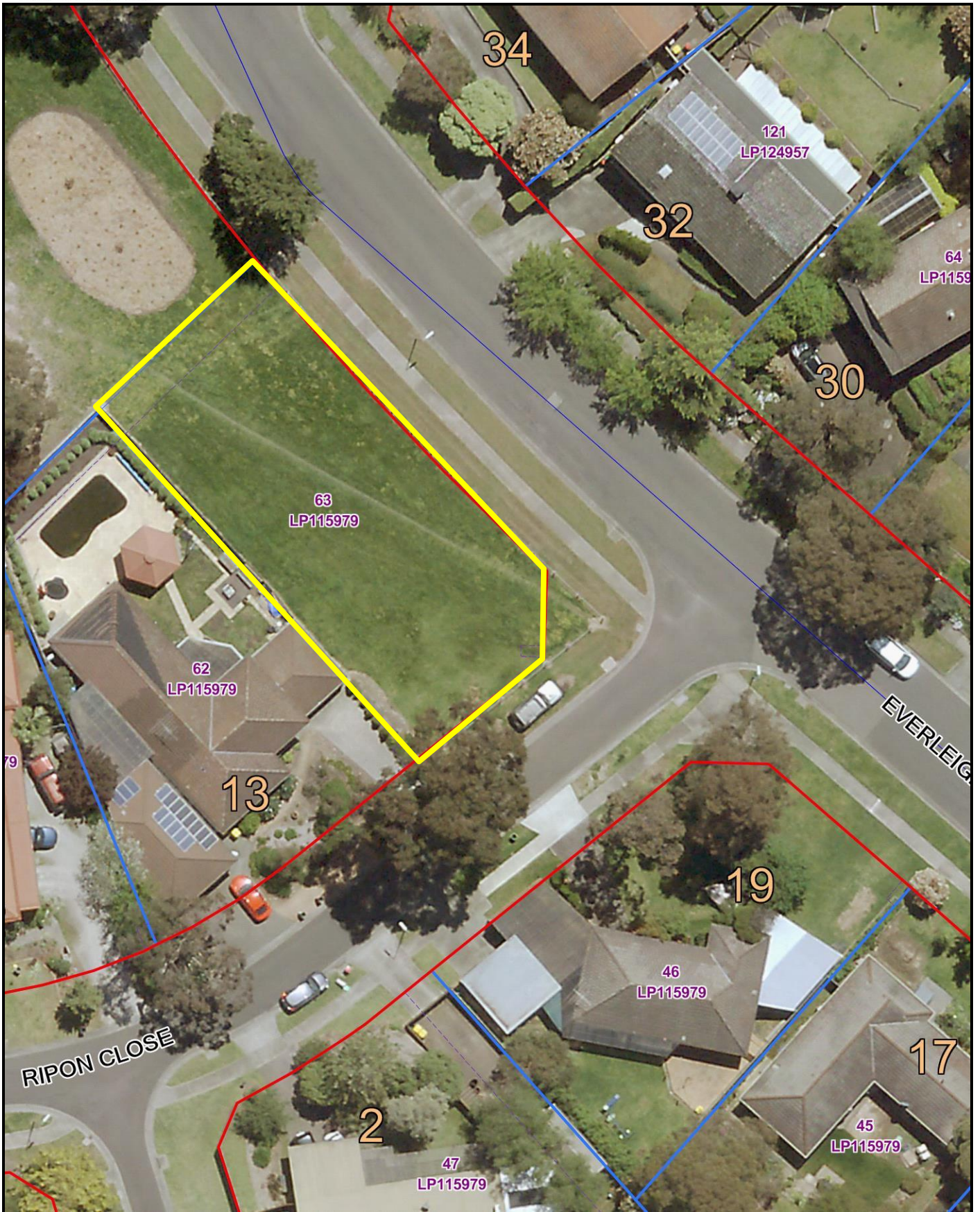


14 Ripon Close, Diamond Creek



This material may be of assistance to you, but the State of Victoria and its employees together with Nillumbik Shire Council and its employees, do not guarantee that the publication is without flaw of any kind or is wholly appropriate for your particular purposes and therefore disclaims all liability for any error, loss or consequences which may arise from you relying on any information contained in this material.



Contains Vicmap information.
© The State of Victoria, Department of Environment, Land, Water & Planning 2016.

© Nillumbik Shire Council 2016.

Date: 10 January 2017

14 Ripon Close Diamond Creek

Reproduced with permission from the Department of Environment, Land, Water & Planning.

