



This material may be of assistance to you, but the State of Victoria and its employees together with Nillumbik Shire Council and its employees, do not guarantee that the publication is without flaw of any kind or is wholly appropriate for your particular purposes and therefore disclaims all liability for any error, loss or consequences which may arise from you relying on any information contained in this material.



Contains Vicmap information.
© The State of Victoria, Department of Environment, Land, Water & Planning 2016.

© Nillumbik Shire Council 2016.

Map Width: 135.9 m

Date: Tuesday, 5 December 2017

Reproduced with permission from the Department of Environment, Land, Water & Planning.



PARCEL No.	OWNERSHIP / LAND STATUS	AREA
235	B. & M. HRUSZECKY	C/T 8320/333 2325m ²
236	B. & M. HRUSZECKY	C/T 8320/333 707m ²
237	J. & S.R. HAMMOND	C/T 11222/932 65m ²
238	S. HANSON	C/T 11222/931 80m ²
239	MILLUMBICK SHIRE COUNCIL/RESERVE	C/T 11092/475 13m ²
240	L.M. GANNAWAY	C/T 8055/980 2130m ²
241	MILLUMBICK SHIRE COUNCIL	C/T 11092/472 1806m ²
242	B. & M. HRUSZECKY	C/T 8320/333 1-720ha(T)
243	J. & S.R. HAMMOND	C/T 11222/932 4666m ² (T)
244	S. HANSON	C/T 11222/931 6619m ² (T)
245	L.M. GANNAWAY	C/T 11092/472 3498m ² (T)
246	MILLUMBICK SHIRE COUNCIL	C/T 8055/980 1917m ² (T)

(T) INDICATES THAT THE AREA SHOWN IS OBTAINED BY DEDUCTION FROM TITLE AREA.

ROADS CORPORATION
 60 DENMARK STREET
 KEW 3101

INTEGRATION SERVICES
 SURVEY AND DECLARATION

PLAN OF SURVEY

SP23502

COUNTY OF EVELYN
 PARISH OF MORANG
 CROWN PORTION (SPART)

MI 7922/5
 DIREC MELWAY
 SHIRE PROF
 YAN YEAN ACQUIRE & DECI
 (235) (237) (238)

AN956089N
 21/06/2017
 \$6130 LACA

I, WARREN PATCHING of Paroisson Grant and Assoc., Suite 10, 131 Bulteen Road, North Balwyn, 3104, certify that this plan has been prepared from a survey made under my direction and supervision in accordance with the Surveying Act 2004 and completed on 12/06/2016 that this plan is accurate and correctly represents the adopted boundaries and that the survey accuracy accords with that required by regulation 7(1) of the Surveying (Kadastral Surveys) Regulations 2015.
 Date: 30/1/2017.

W. Patching
 Licensed Surveyor, Surveying Act 2004.

COMPILED FROM DRAWN DS

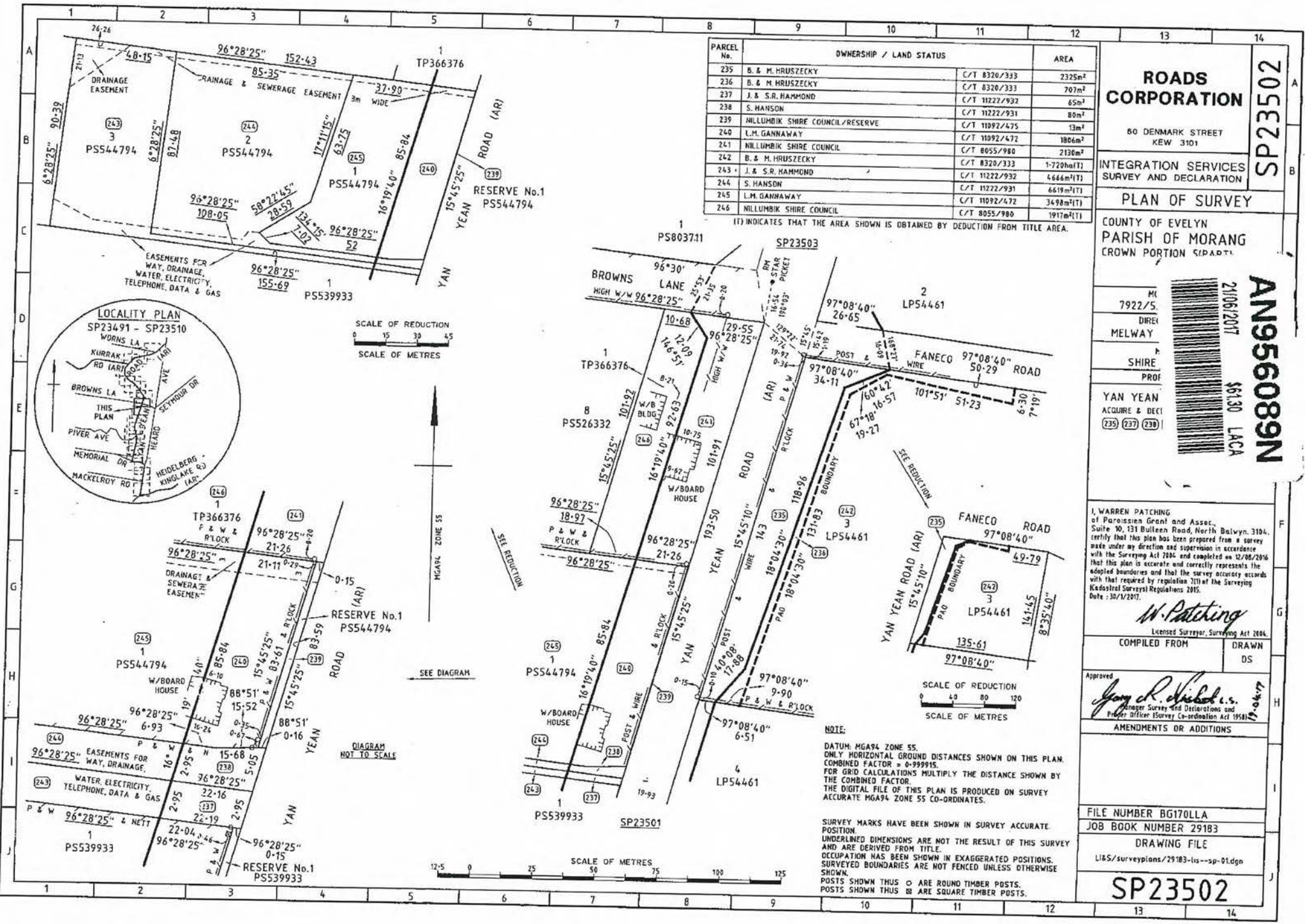
Approved *Greg R. Kibler i.s.*
 Manager Survey and Declarations and
 Principal Officer (Survey Co-ordination Act 1958)

AMENDMENTS OR ADDITIONS

FILE NUMBER BG170LLA
 JOB BOOK NUMBER 29183

DRAWING FILE
 L1&S/surveyplans/29183-lis--sp-01.dgn

SP23502



14 Ripon Close, Diamond Creek



This material may be of assistance to you, but the State of Victoria and its employees together with Nillumbik Shire Council and its employees, do not guarantee that the publication is without flaw of any kind or is wholly appropriate for your particular purposes and therefore disclaims all liability for any error, loss or consequences which may arise from you relying on any information contained in this material.



Contains Vicmap information.
© The State of Victoria, Department of Environment, Land, Water & Planning 2016.

© Nillumbik Shire Council 2016.

Date: 10 January 2017

14 Ripon Close Diamond Creek

Reproduced with permission from the Department of Environment, Land, Water & Planning.





LOCATION OF LAND

PARISH: NILLUMBIK
 TOWNSHIP: _____
 SECTION: II
 CROWN ALLOTMENT: D (PART)
 CROWN PORTION: _____
 TITLE REFERENCE: C/T VOL.9010 FOL.263

LAST PLAN REFERENCE/S: TP.469159F
 POSTAL ADDRESS: 34 GLEN PARK ROAD
 (at time of subdivision) ELTHAM NORTH, 3095

MGA94 CO-ORDINATES: E: 336 390 ZONE: 55
 (of approx centre of land N: 5 826 010 GDA 94
 in plan)

NILLUMBIK SHIRE COUNCIL

VESTING OF ROADS AND/OR RESERVES

IDENTIFIER	COUNCIL/BODY/PERSON
RESERVE No.1	NILLUMBIK SHIRE COUNCIL

NOTATIONS

BEARINGS SHOWN ARE ON TITLE DATUM

PRELIMINARY PRINT

NOTATIONS

DEPTH LIMITATION DOES NOT APPLY

SURVEY:
This plan is based on survey.

STAGING:
This is not a staged subdivision.
Planning Permit No.

This survey has been connected to permanent marks No(s).
In Proclaimed Survey Area No.

EASEMENT INFORMATION

LEGEND: A - Appurtenant Easement E - Encumbering Easement R - Encumbering Easement (Road)

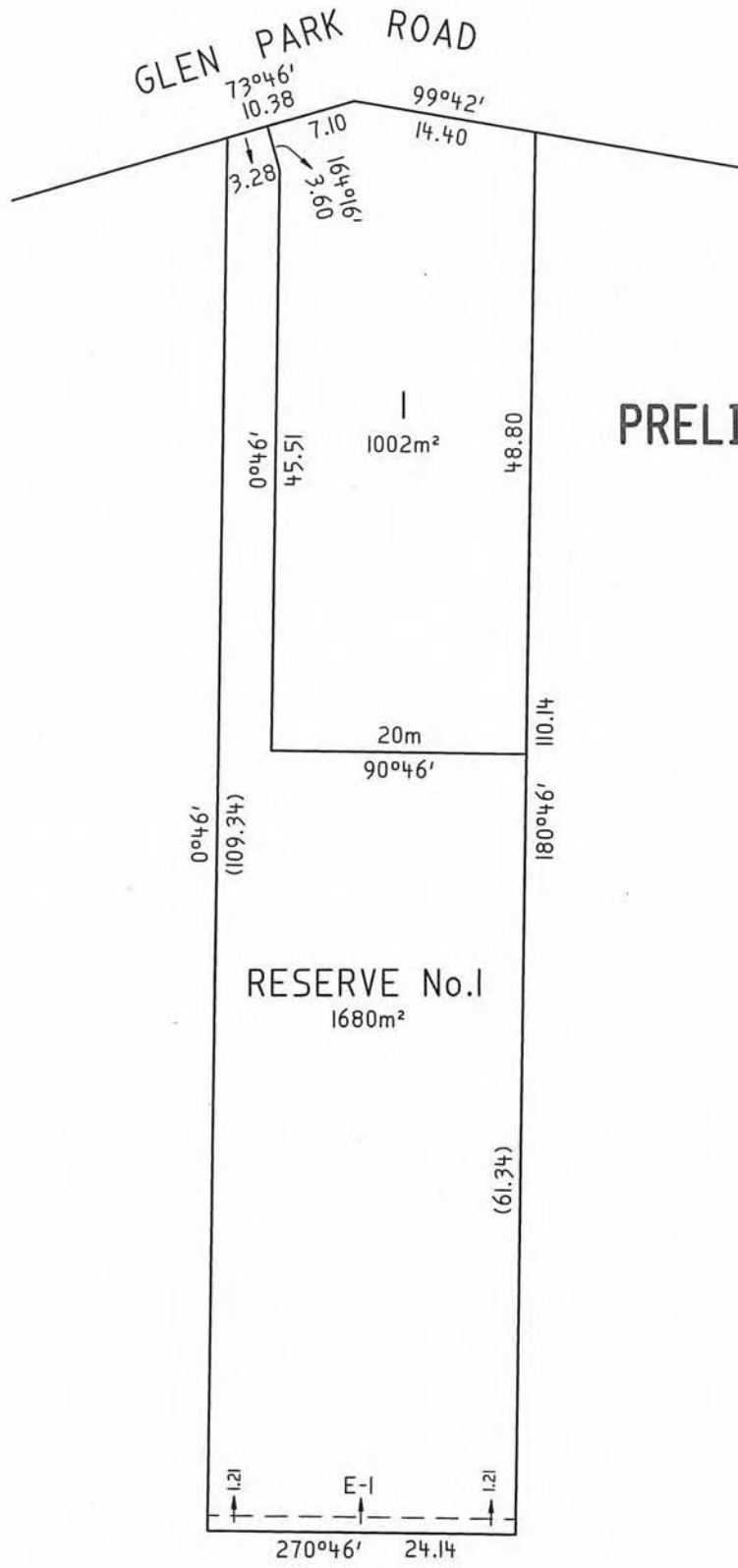
Easement Reference	Purpose	Width (Metres)	Origin	Land Benefited/In Favour Of
E-1	ANY EASEMENTS DRAINAGE DRAINAGE	1.21	SEE C/T VOL.9010 FOL.263 LP.6091 THIS PLAN	UNSPECIFIED LOTS ON LP.6091 NILLUMBIK SHIRE COUNCIL

LAWLOR AND LOY VIC PTY. LTD.
 SURVEYORS, PROPERTY MANAGEMENT
 & TOWN PLANNING CONSULTANTS
 UNIT 3, 18 SHERBOURNE ROAD BRIAR HILL 3088
 P.O. BOX 242 GREENSBOROUGH 3088
 PH:9435 2422 FAX:9432 1256
 EMAIL: lawloy@netspace.net.au

REF: **8069-6** VERSION: |

LICENSED SURVEYOR DEAN PAUL EDDY

ORIGINAL SHEET SIZE: A3 SHEET 1 OF 2



PRELIMINARY PRINT



SCALE 1:400	4 0 4 8 12 16 LENGTHS ARE IN METRES
----------------	--

LAWLOR AND LOY VIC PTY. LTD.
 SURVEYORS, PROPERTY MANAGEMENT
 & TOWN PLANNING CONSULTANTS
 UNIT 3, 18 SHERBOURNE ROAD BRIAR HILL 3088
 P.O. BOX 242 GREENSBOROUGH 3088
 PH:9435 2422 FAX:9432 1256
 EMAIL: lawloy@netspace.net.au

REF: 8069-6 VERSION: |
 LICENSED SURVEYOR DEAN PAUL EDDY

ORIGINAL SHEET SIZE: A3 SHEET 2

60 David Hockney Drive , Diamond Creek



This material may be of assistance to you, but the State of Victoria and its employees together with Nillumbik Shire Council and its employees, do not guarantee that the publication is without flaw of any kind or is wholly appropriate for your particular purposes and therefore disclaims all liability for any error, loss or consequences which may arise from you relying on any information contained in this material.



Contains Vicmap information.
© The State of Victoria, Department of Environment, Land, Water & Planning 2016.

© Nillumbik Shire Council 2016.

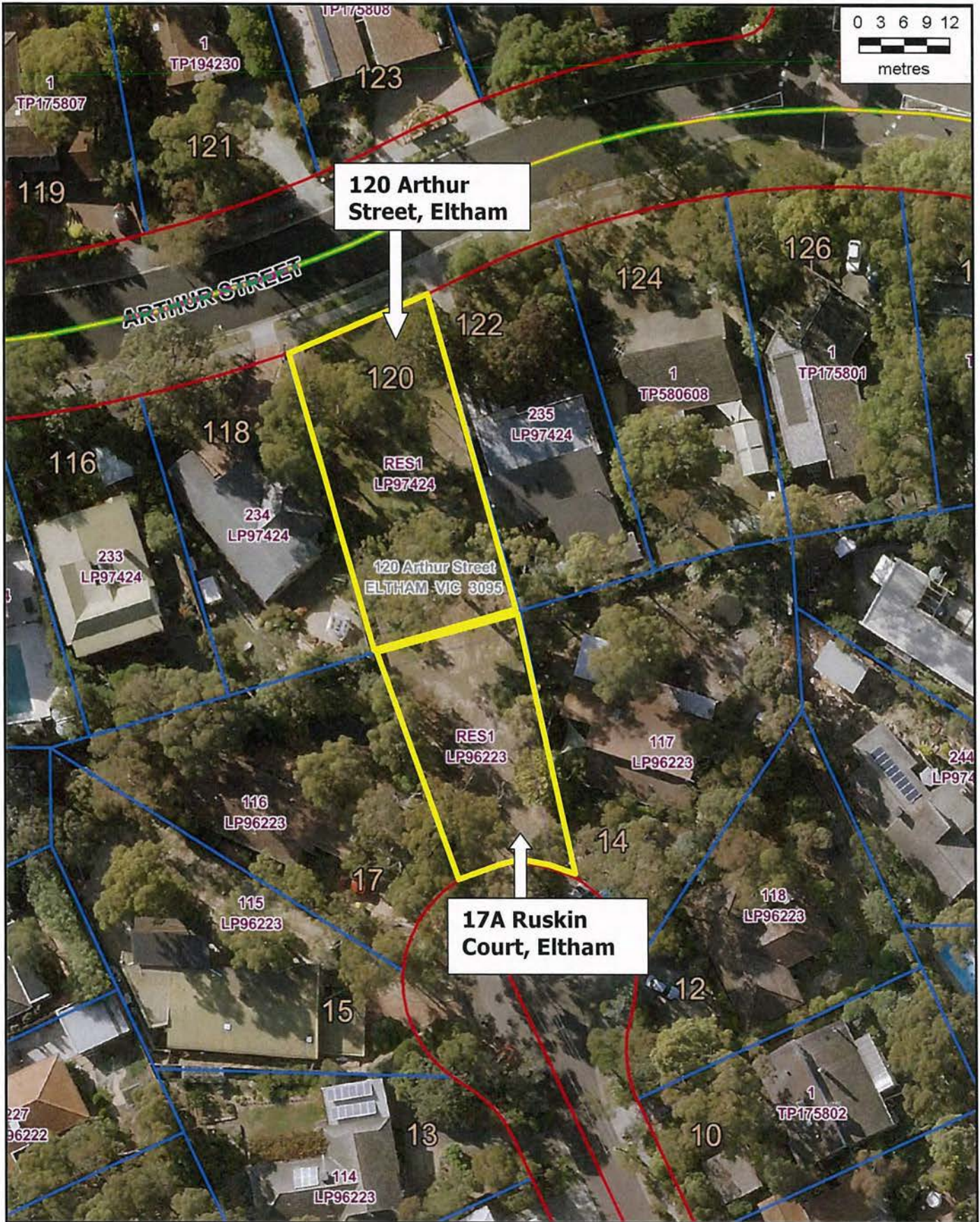
Date: 10 January 2017

**60 David Hockney Dr/21 Monomeath Ave
Diamond Creek**



Reproduced with permission from the Department of Environment, Land, Water & Planning.

120 Arthur St & 17A Ruskin Crt, Eltham



This material may be of assistance to you, but the State of Victoria and its employees together with Nillumbik Shire Council and its employees, do not guarantee that the publication is without flaw of any kind or is wholly appropriate for your particular purposes and therefore disclaims all liability for any error, loss or consequences which may arise from you relying on any information contained in this material.

© Nillumbik Shire Council 2016.

Map Width: 126.6 m

Date: Wednesday, 15 November 2017

Reproduced with permission from the Department of Environment, Land, Water & Planning.



Contains Vicmap information.
© The State of Victoria, Department of Environment, Land, Water & Planning 2016.



26 Renshaw Drive, Eltham



This material may be of assistance to you, but the State of Victoria and its employees together with Nillumbik Shire Council and its employees, do not guarantee that the publication is without flaw of any kind or is wholly appropriate for your particular purposes and therefore disclaims all liability for any error, loss or consequences which may arise from you relying on any information contained in this material.



Contains Vicmap information.
© The State of Victoria, Department of Environment, Land, Water & Planning 2016.

© Nillumbik Shire Council 2016.

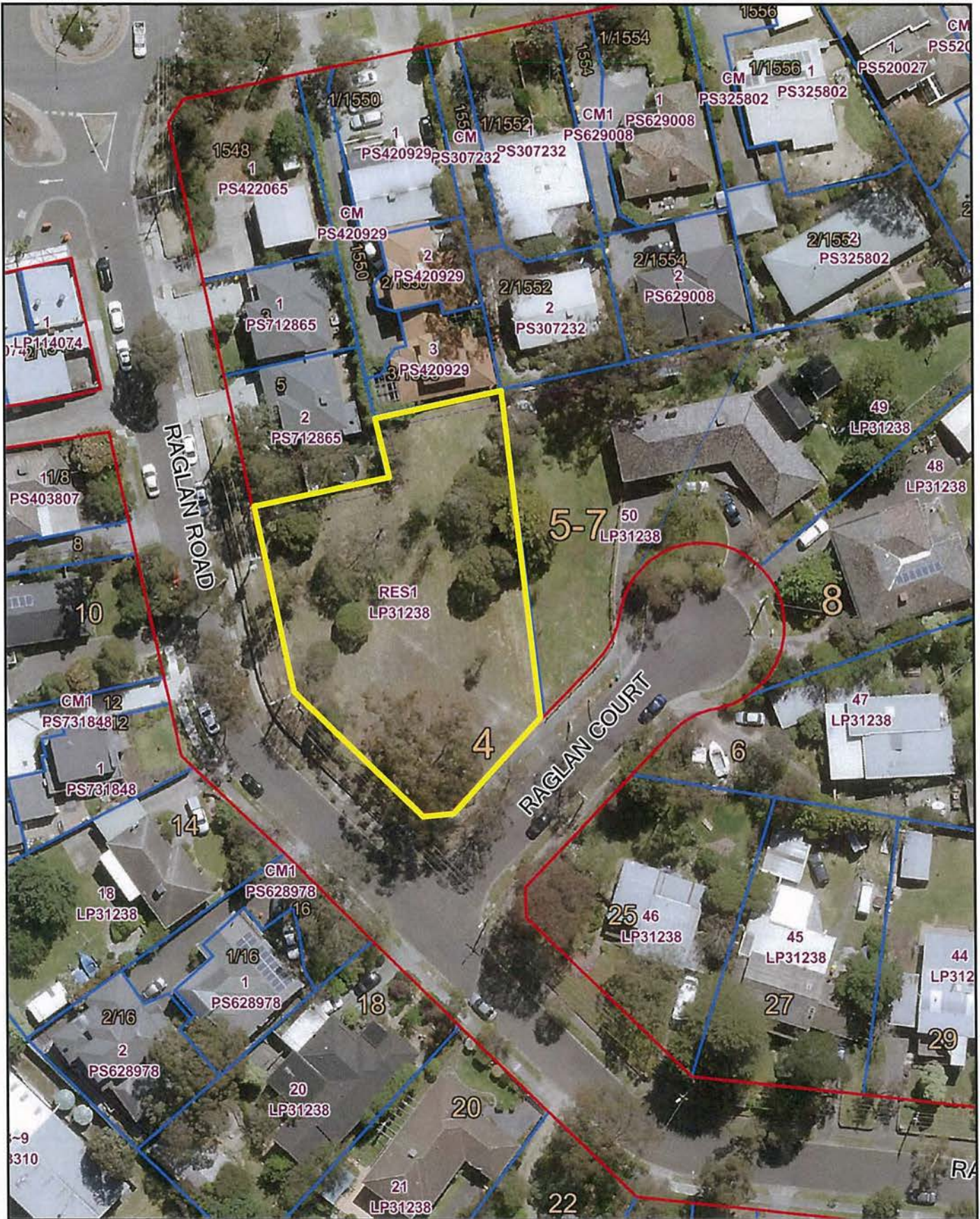
Date: 10 January 2017

26 Renshaw Drive Eltham

Reproduced with permission from the Department of Environment, Land, Water & Planning.



4 Raglan Court, Research



This material may be of assistance to you, but the State of Victoria and its employees together with Nillumbik Shire Council and its employees, do not guarantee that the publication is without flaw of any kind or is wholly appropriate for your particular purposes and therefore disclaims all liability for any error, loss or consequences which may arise from you relying on any information contained in this material.

© Nillumbik Shire Council 2016.

Date: 10 January 2017

4 Raglan Court Research



Contains Vicmap information.
© The State of Victoria, Department of Environment, Land, Water & Planning 2016.

Reproduced with permission from the
Department of Environment, Land, Water & Planning.

8-9 Cosham Court, Eltham



This material may be of assistance to you, but the State of Victoria and its employees together with Nillumbik Shire Council and its employees, do not guarantee that the publication is without flaw of any kind or is wholly appropriate for your particular purposes and therefore disclaims all liability for any error, loss or consequences which may arise from you relying on any information contained in this material.



Contains Vicmap information.
© The State of Victoria, Department of Environment, Land, Water & Planning 2016.

© Nillumbik Shire Council 2016.

Date: 17 January 2017

8-9 Cosham Crt Greensborough

Reproduced with permission from the Department of Environment, Land, Water & Planning.



12 The Eyrie, Eltham



This material may be of assistance to you, but the State of Victoria and its employees together with Nillumbik Shire Council and its employees, do not guarantee that the publication is without flaw of any kind or is wholly appropriate for your particular purposes and therefore disclaims all liability for any error, loss or consequences which may arise from you relying on any information contained in this material.



Contains Vicmap information.
© The State of Victoria, Department of Environment, Land, Water & Planning 2016.

© Nillumbik Shire Council 2016.

Date: 12 January 2017

12 The Eyrie Eltham
The Eyrie Reserve

Reproduced with permission from the
Department of Environment, Land, Water & Planning.



46 Symon Crescent, Greensborough



This material may be of assistance to you, but the State of Victoria and its employees together with Nillumbik Shire Council and its employees, do not guarantee that the publication is without flaw of any kind or is wholly appropriate for your particular purposes and therefore disclaims all liability for any error, loss or consequences which may arise from you relying on any information contained in this material.



Contains Vicmap information.

© The State of Victoria, Department of Environment, Land, Water & Planning 2016.

Reproduced with permission from the Department of Environment, Land, Water & Planning.

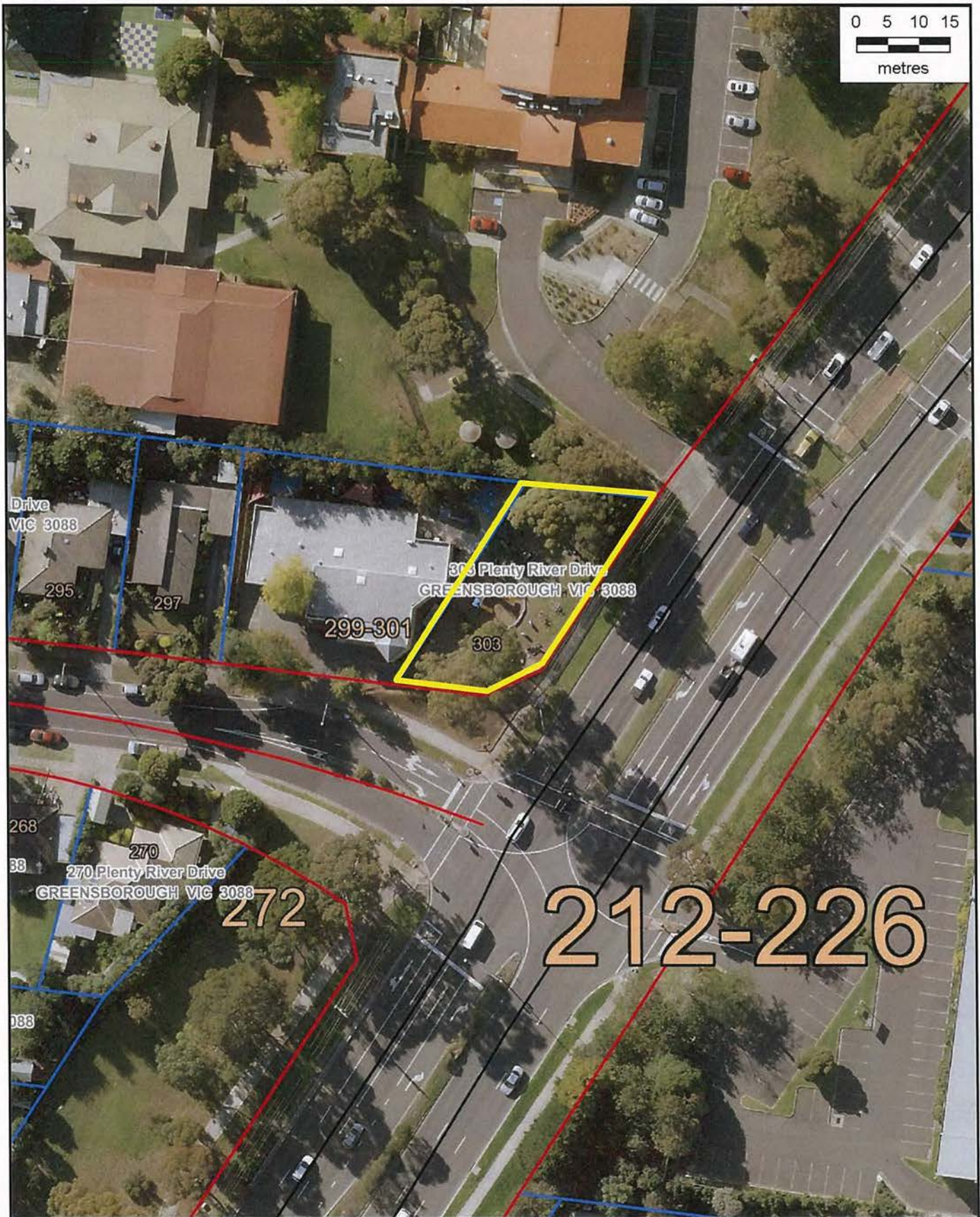
© Nillumbik Shire Council 2016.

Date:

Tuesday, 10 January 2017

46 Symon Cres Greensborough





This material may be of assistance to you, but the State of Victoria and its employees together with Nillumbik Shire Council and its employees, do not guarantee that the publication is without flaw of any kind or is wholly appropriate for your particular purposes and therefore disclaims all liability for any error, loss or consequences which may arise from you relying on any information contained in this material.

© Nillumbik Shire Council 2016.

Map Width: 152.8 m

Date: Friday, 17 November 2017

Reproduced with permission from the Department of Environment, Land, Water & Planning.



Contains Vicmap information.
© The State of Victoria, Department of Environment, Land, Water & Planning 2016.

18A Citriodora Court, Diamond Creek



**18A Citriodora
Crt, Diamond
Creek**



This material may be of assistance to you, but the State of Victoria and its employees together with Nillumbik Shire Council and its employees, do not guarantee that the publication is without flaw of any kind or is wholly appropriate for your particular purposes and therefore disclaims all liability for any error, loss or consequences which may arise from you relying on any information contained in this material.

© Nillumbik Shire Council 2016.

Map Width: 275.4 m

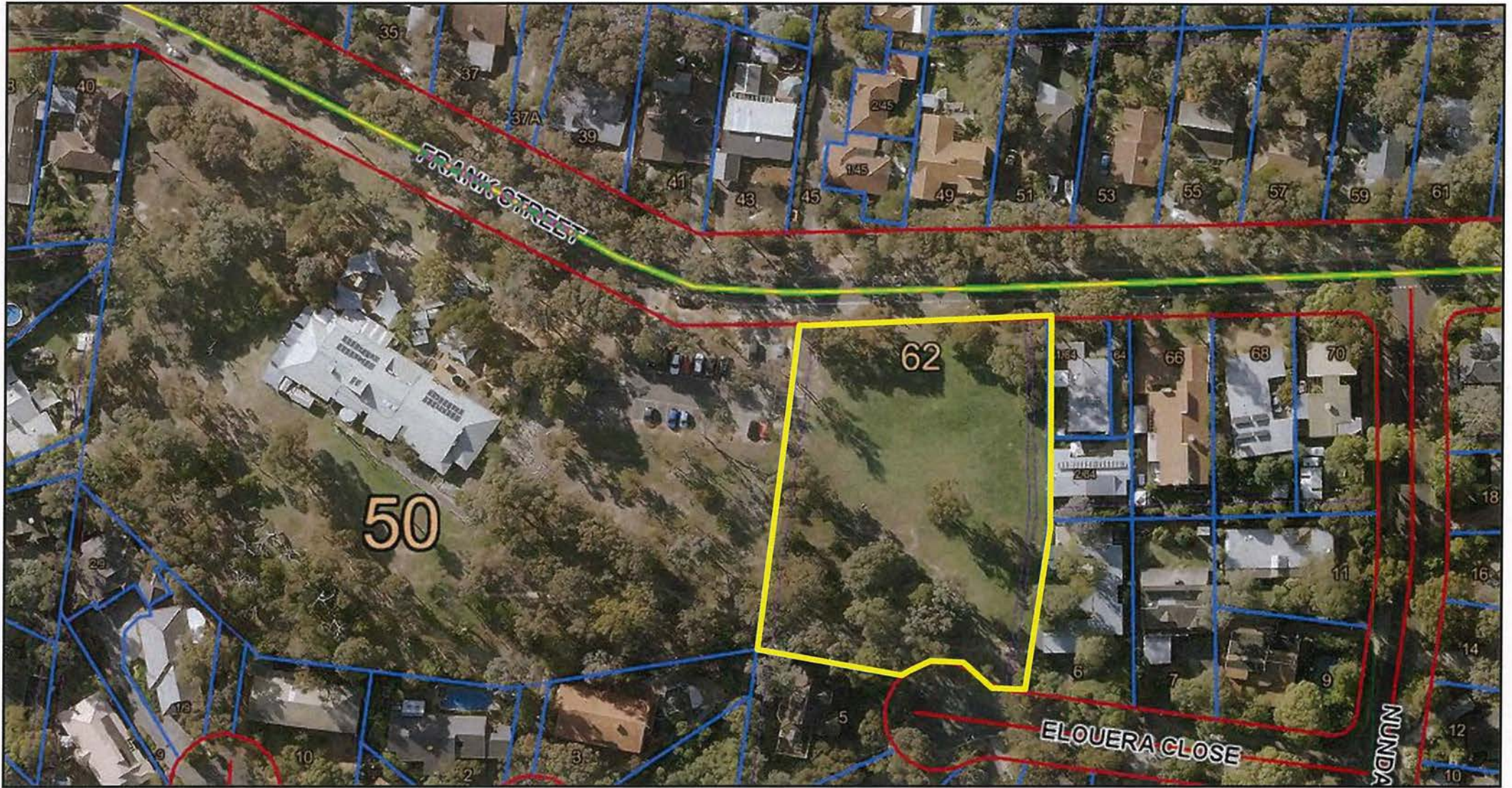
Date: Monday, 30 October 2017

Reproduced with permission from the Department of Environment, Land, Water & Planning.



Contains Vicmap information.
© The State of Victoria, Department of Environment, Land, Water & Planning 2016.

62 Frank Street, Eltham



This material may be of assistance to you, but the State of Victoria and its employees together with Nillumbik Shire Council and its employees, do not guarantee that the publication is without flaw of any kind or is wholly appropriate for your particular purposes and therefore disclaims all liability for any error, loss or consequences which may arise from you relying on any information contained in this material.



Contains Vicmap information.
© The State of Victoria, Department of Environment, Land, Water & Planning 2016.

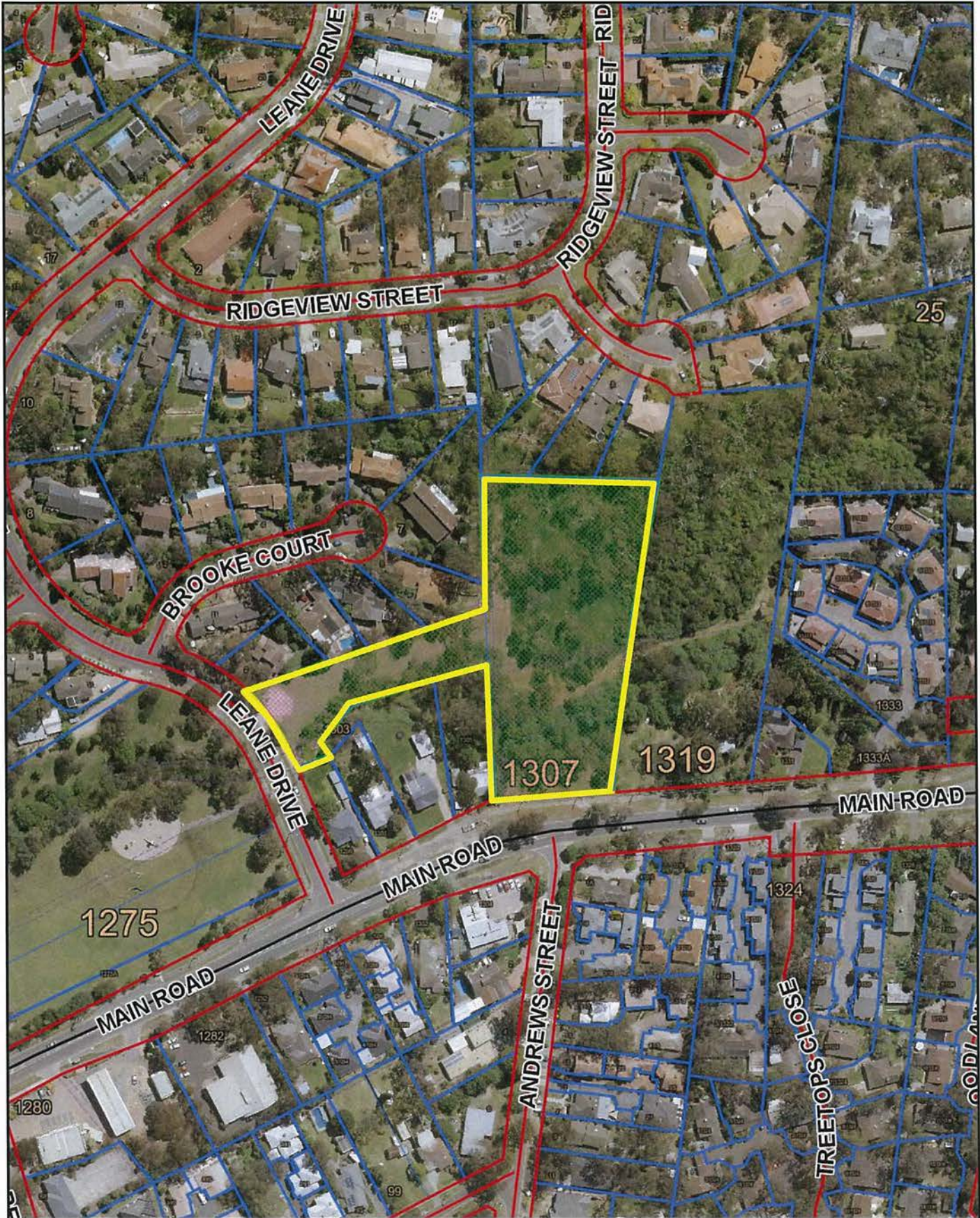
Reproduced with permission from the Department of Environment, Land, Water & Planning.

© Nillumbik Shire Council 2016.

Map Width: 331.2 m

Date: Friday, 17 November 2017





This material may be of assistance to you, but the State of Victoria and its employees together with Nillumbik Shire Council and its employees, do not guarantee that the publication is without flaw of any kind or is wholly appropriate for your particular purposes and therefore disclaims all liability for any error, loss or consequences which may arise from you relying on any information contained in this material.

© Nillumbik Shire Council 2016.

Map Width: 424.9 m

Date: Monday, 27 March 2017

1307 Main Road, Eltham

Reproduced with permission from the Department of Environment, Land, Water & Planning.



Contains Vicmap information.
© The State of Victoria, Department of Environment, Land, Water & Planning 2016.

20A Henry Street, Eltham (Roseo St on Title)



This material may be of assistance to you, but the State of Victoria and its employees together with Nillumbik Shire Council and its employees, do not guarantee that the publication is without flaw of any kind or is wholly appropriate for your particular purposes and therefore disclaims all liability for any error, loss or consequences which may arise from you relying on any information contained in this material.

© Nillumbik Shire Council 2016.

Date:

Tuesday, 28 March
2017

20A Henry Street, Eltham

Reproduced with permission from the
Department of Environment, Land, Water & Planning.



Contains Viemap information.
© The State of Victoria, Department of Environment,
Land, Water & Planning 2016.



34 Raglan Road, Research (Doney Road on Title)



This material may be of assistance to you, but the State of Victoria and its employees together with Nillumbik Shire Council and its employees, do not guarantee that the publication is without flaw of any kind or is wholly appropriate for your particular purposes and therefore disclaims all liability for any error, loss or consequences which may arise from you relying on any information contained in this material.



Contains Vicmap information.
© The State of Victoria, Department of Environment, Land, Water & Planning 2016.

Reproduced with permission from the Department of Environment, Land, Water & Planning.

© Nillumbik Shire Council 2016.

Map Width: 194.9 m

Date: Friday, 17 November 2017

