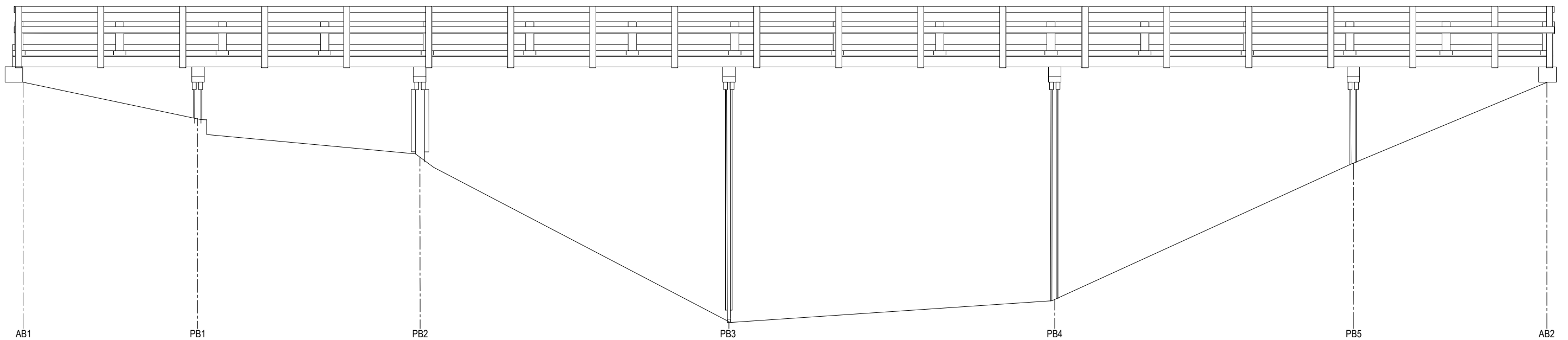
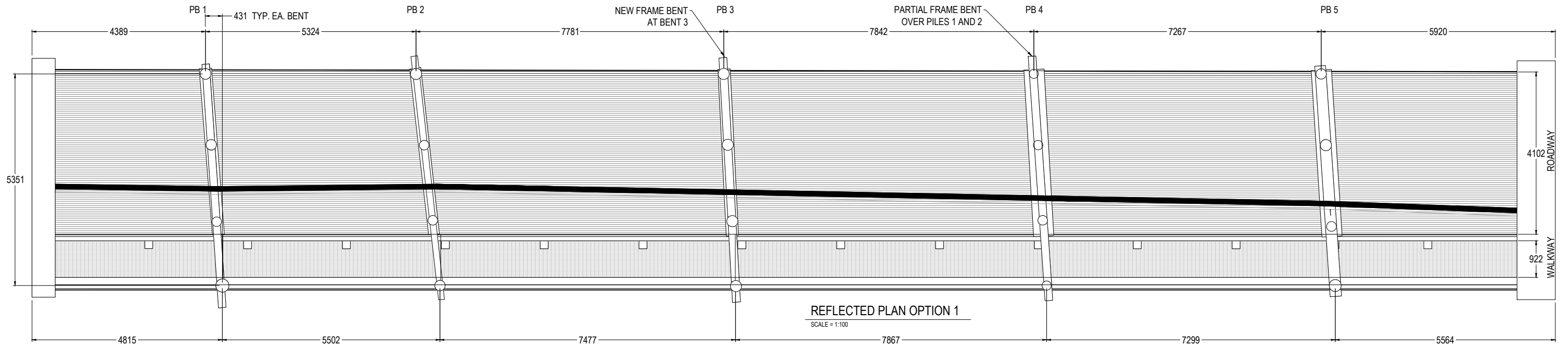
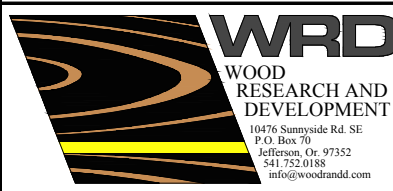


- NOTE:
- FIELD MEASUREMENTS REQUIRED FOR MANUFACTURE AND INSTALLATION OF BRIDGE RETROFIT (MEASUREMENTS ARE APPROXIMATE)
 - FIELD DRILLING OR CUTTING NOT SHOWN ON THESE PLANS IS NOT ALLOWED WITHOUT ENGINEERING APPROVAL. ALL FIELD DRILLED HOLES OR CUT SURFACES REQUIRE TRIPLE CN TREATMENT THEN SEALING WITH ANCHOR SEAL



Z:\xxxx series - TRS\NISC - Nilumbik Shire Council\1412 - Diamond Street Bridge\CAD drawings\Diamond Street 16 MAY 2016.dwg, 1.0, 5/18/2016 3:36:18 PM, ANSI legend B (11.00 x 17.00 Inches), Wood Research and Development



DRAFT
DAN TINGLEY
RPEO #11561
NOT FOR CONSTRUCTION

PREPARED FOR:
NILLUMBIK SHIRE COUNCIL
ADDRESS: CIVIC DRIVE
PO BOX 476
GREENSBOROUGH, VIC. 3088
PHONE:
FAX:

DIAMOND STREET BRIDGE

REVISION	REVISION DESCRIPTION
△	
△	
△	
△	

DATE	DESIGNED BY	CHECKED BY	APPROVED BY
04/12/2016	JRB	CC	aaa

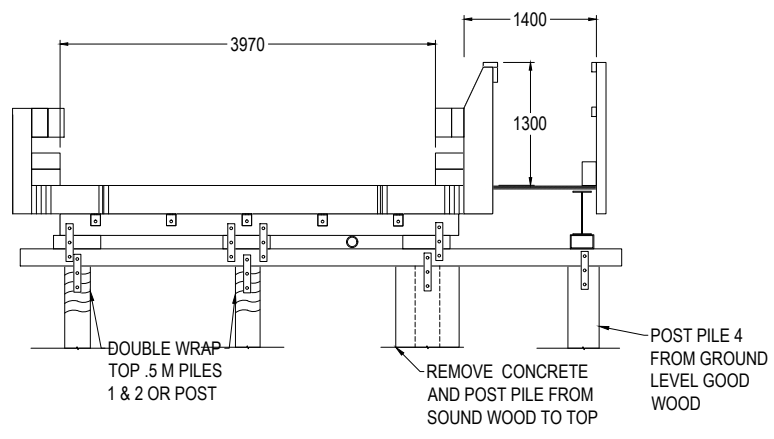
ALL DIMENSIONS ARE METRIC (MILLIMETER OR METER) UNLESS OTHERWISE STATED

PLAN & ELEVATION OPTION 1

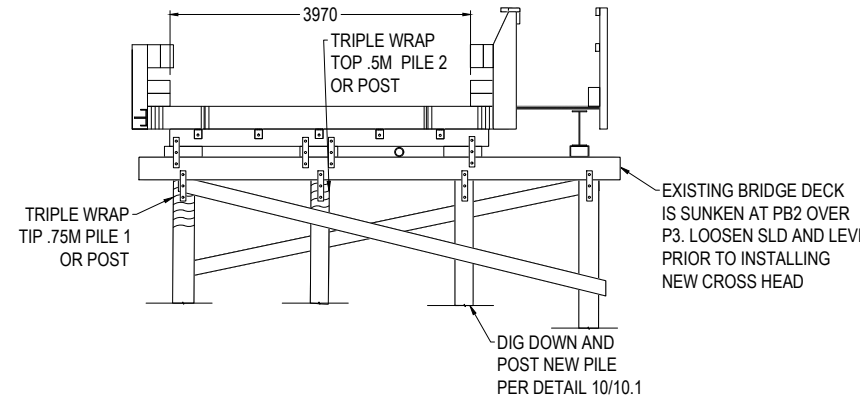
DRAWING #
1.0

SHEET #
4 OF 14

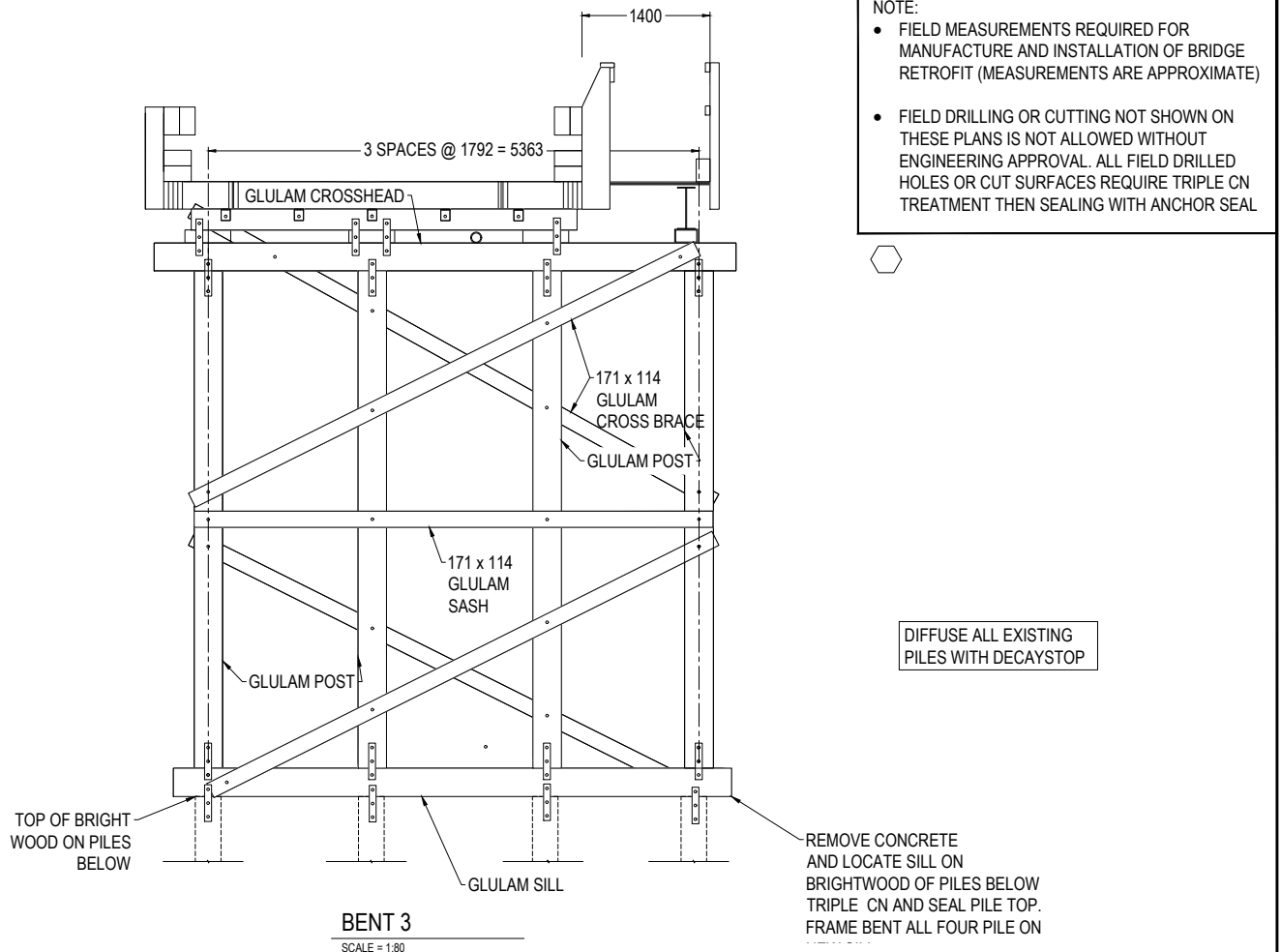
PROJECT #1412



BENT 1
SCALE = 1:100



BENT 2
SCALE = 1:80

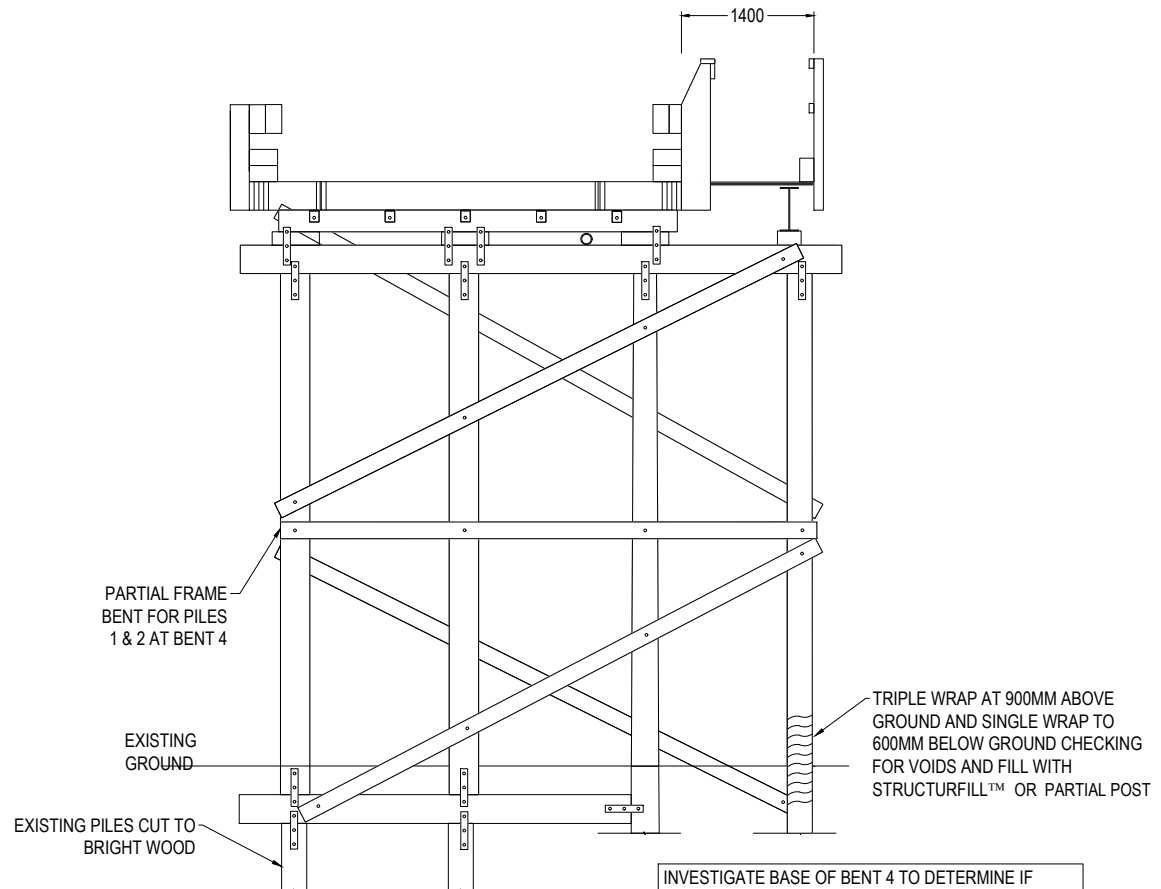


BENT 3
SCALE = 1:80

NOTE:

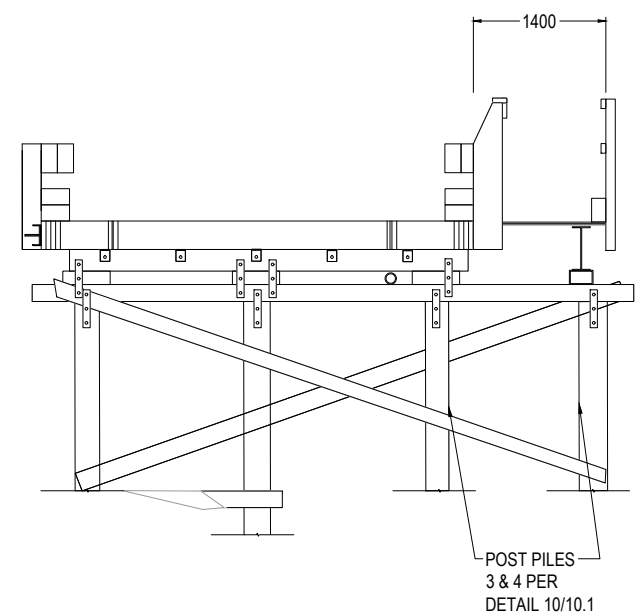
- FIELD MEASUREMENTS REQUIRED FOR MANUFACTURE AND INSTALLATION OF BRIDGE RETROFIT (MEASUREMENTS ARE APPROXIMATE)
- FIELD DRILLING OR CUTTING NOT SHOWN ON THESE PLANS IS NOT ALLOWED WITHOUT ENGINEERING APPROVAL. ALL FIELD DRILLED HOLES OR CUT SURFACES REQUIRE TRIPLE CN TREATMENT THEN SEALING WITH ANCHOR SEAL

DIFFUSE ALL EXISTING PILES WITH DECAYSTOP



BENT 4
SCALE = 1:80

INVESTIGATE BASE OF BENT 4 TO DETERMINE IF CONCRETE SILL EXISTS BELOW GRADE. CONTACT ENGINEER OF RECORD IF CONCRETE SILL IS FOUND.



BENT 5
SCALE = 1:80

Z:\1xxx series - TRS\NISC - Nilumbik Shire Council\1412 - Diamond Street Bridge\CAD drawings\Diamond Street 16 MAY 2016.dwg, 1.1, 5/18/2016 3:56:53 PM, ANSI Legend B (1:100 x 17:00 inches), Wood Research and Development



PREPARED FOR:
NILLUMBIK SHIRE COUNCIL
ADDRESS: CIVIC DRIVE
PO BOX 476
GREENSBOROUGH, VIC. 3088
PHONE:
FAX:

DRAFT
RPEO #11561
NOT FOR CONSTRUCTION

DIAMOND STREET BRIDGE

REVISION DESCRIPTION	DATE	DESIGNED BY	CHECKED BY	APPROVED BY
△	04/12/2016	JRE	CC	aaa
△				
△				
△				

REASON FOR REVISION	DATE	DESIGNED BY	CHECKED BY	APPROVED BY

ALL DIMENSIONS ARE METRIC (MILLIMETER OR METER) UNLESS OTHERWISE STATED

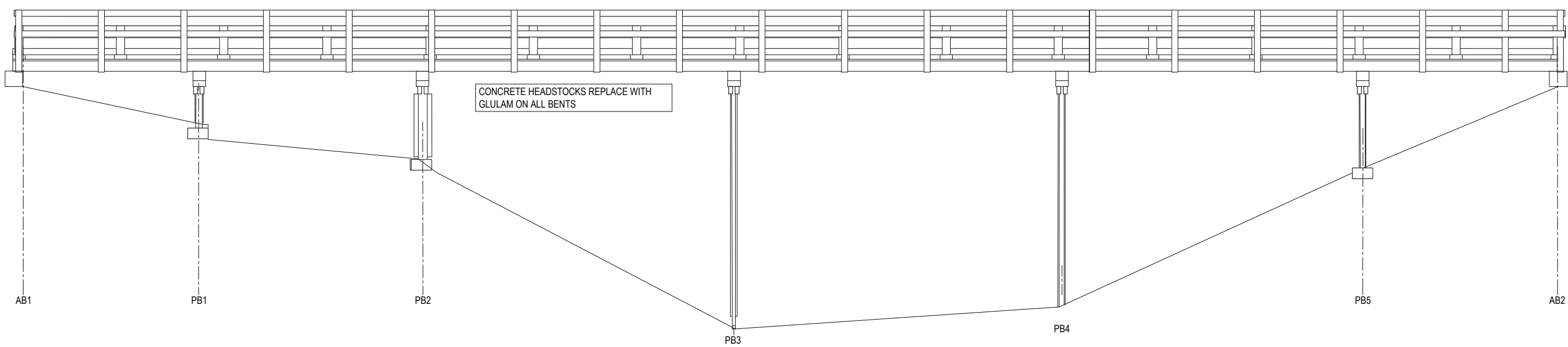
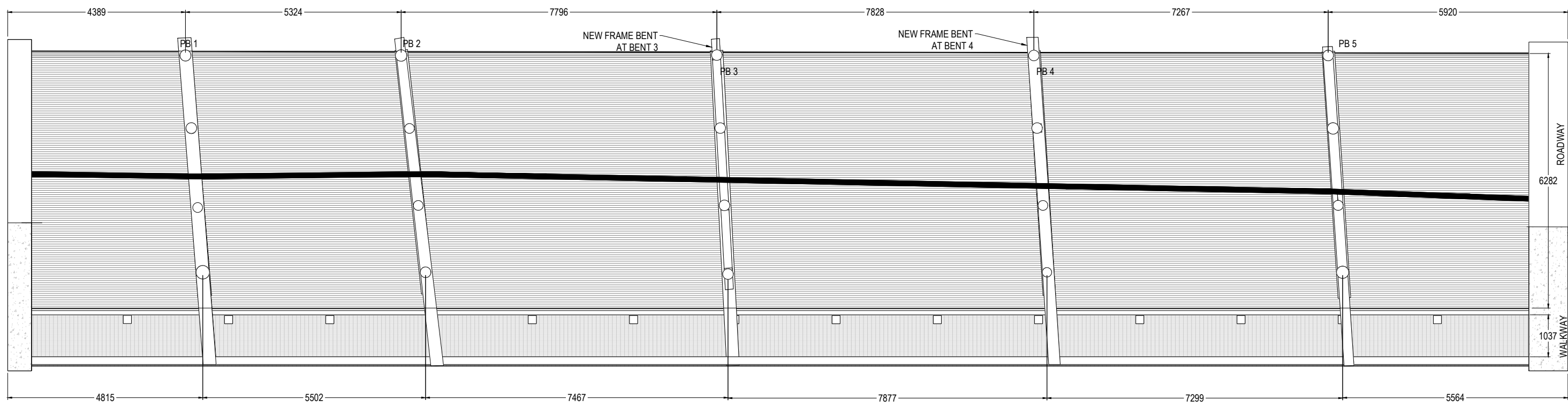
BENT SECTIONS FOR OPTION 1

DRAWING #
1.1

SHEET #
5 OF 14

PROJECT #1412

- NOTE:
- FIELD MEASUREMENTS REQUIRED FOR MANUFACTURE AND INSTALLATION OF BRIDGE RETROFIT (MEASUREMENTS ARE APPROXIMATE)
 - FIELD DRILLING OR CUTTING NOT SHOWN ON THESE PLANS IS NOT ALLOWED WITHOUT ENGINEERING APPROVAL. ALL FIELD DRILLED HOLES OR CUT SURFACES REQUIRE TRIPLE CN TREATMENT THEN SEALING WITH ANCHOR SEAL



Z:\lxxx series - TRS\NISC - Nilumbik Shire Council\1412 - Diamond Street Bridge\CAD drawings\Diamond Street 16 MAY 2016.dwg, 2.0, 5/18/2016 3:56:52 PM, ANSI legend B (11.00 x 17.00 inches), Wood Research and Development



DRAFT
DAN TINGLEY
RPEO #11561
NOT FOR
CONSTRUCTION

PREPARED FOR:
NILLUMBIK SHIRE COUNCIL
ADDRESS: CIVIC DRIVE
PO BOX 476
GREENSBOROUGH, VIC. 3088
PHONE:
FAX:

DIAMOND STREET BRIDGE

REVISION	REVISION DESCRIPTION
△	
△	
△	
△	

REASON FOR CHANGE	DATE	DESIGNED BY	CHECKED BY	APPROVED BY
	04/12/2016	JRE	ccc	aaa

ALL DIMENSIONS ARE METRIC (MILLIMETER OR METER) UNLESS OTHERWISE STATED

OPTION 2 REFLECTED PLAN & ELEVATION

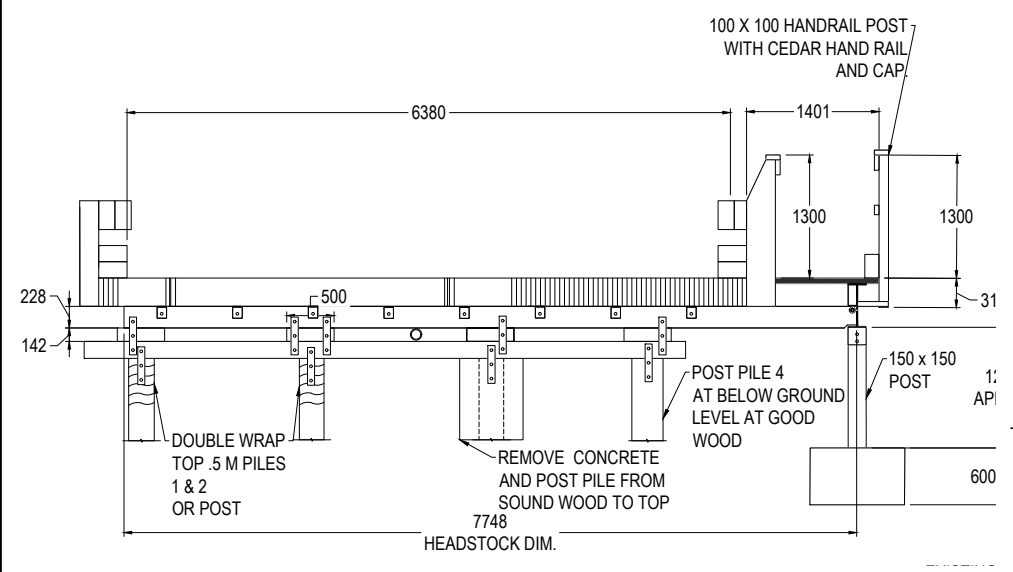
DRAWING #
2.0

SHEET #
7 OF 14

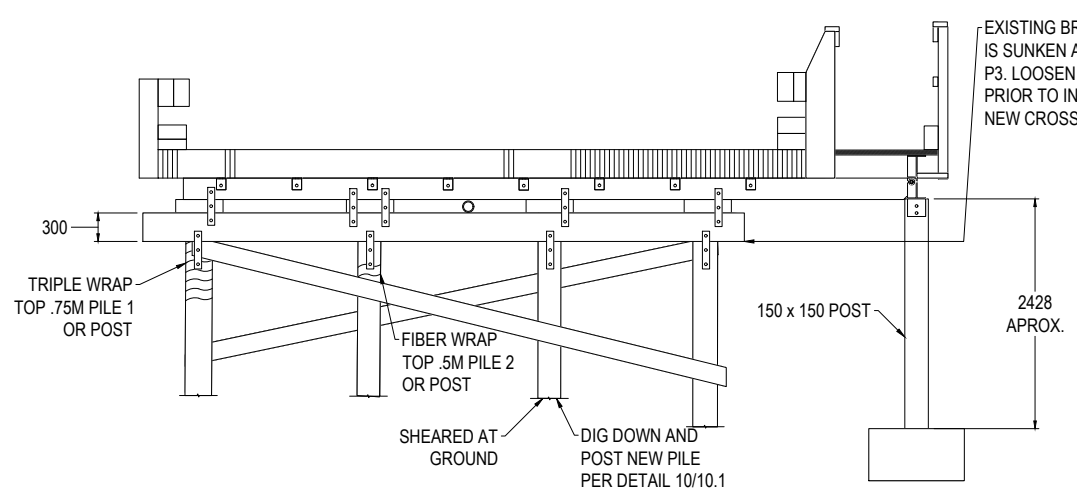
PROJECT #1412

NOTE:

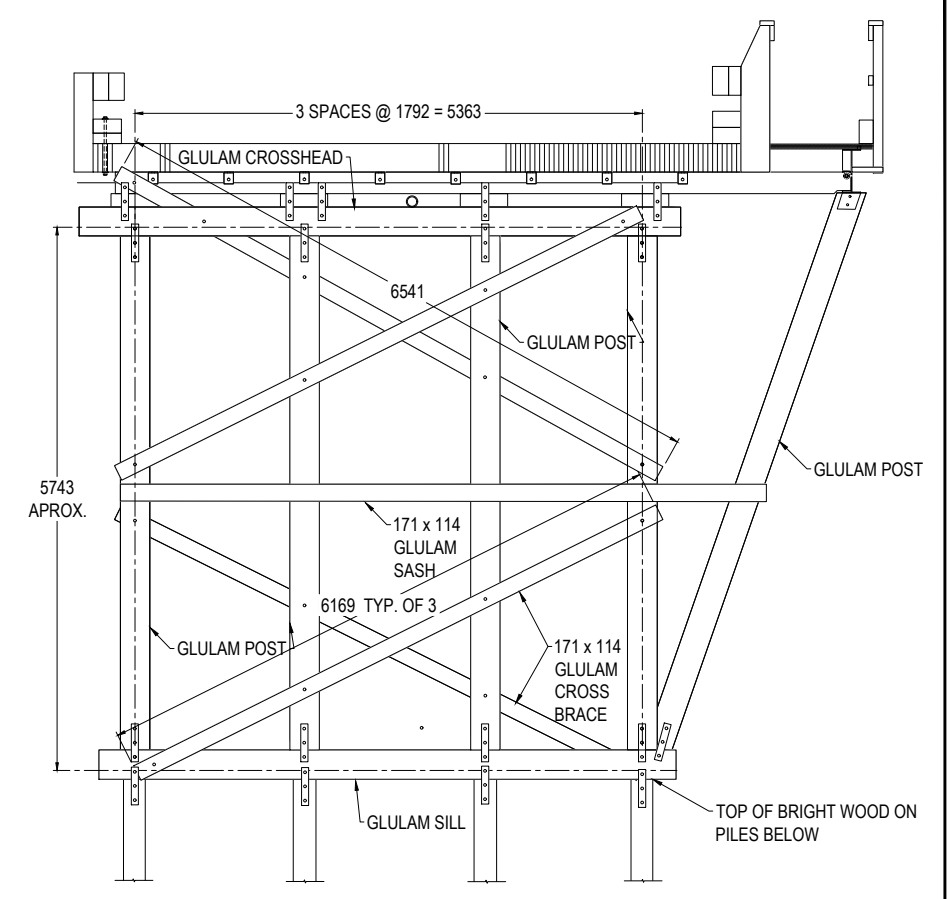
- FIELD MEASUREMENTS REQUIRED FOR MANUFACTURE AND INSTALLATION OF BRIDGE RETROFIT (MEASUREMENTS ARE APPROXIMATE)
- FIELD DRILLING OR CUTTING NOT SHOWN ON THESE PLANS IS NOT ALLOWED WITHOUT ENGINEERING APPROVAL. ALL FIELD DRILLED HOLES OR CUT SURFACES REQUIRE TRIPLE CN TREATMENT THEN SEALING WITH ANCHOR SEAL



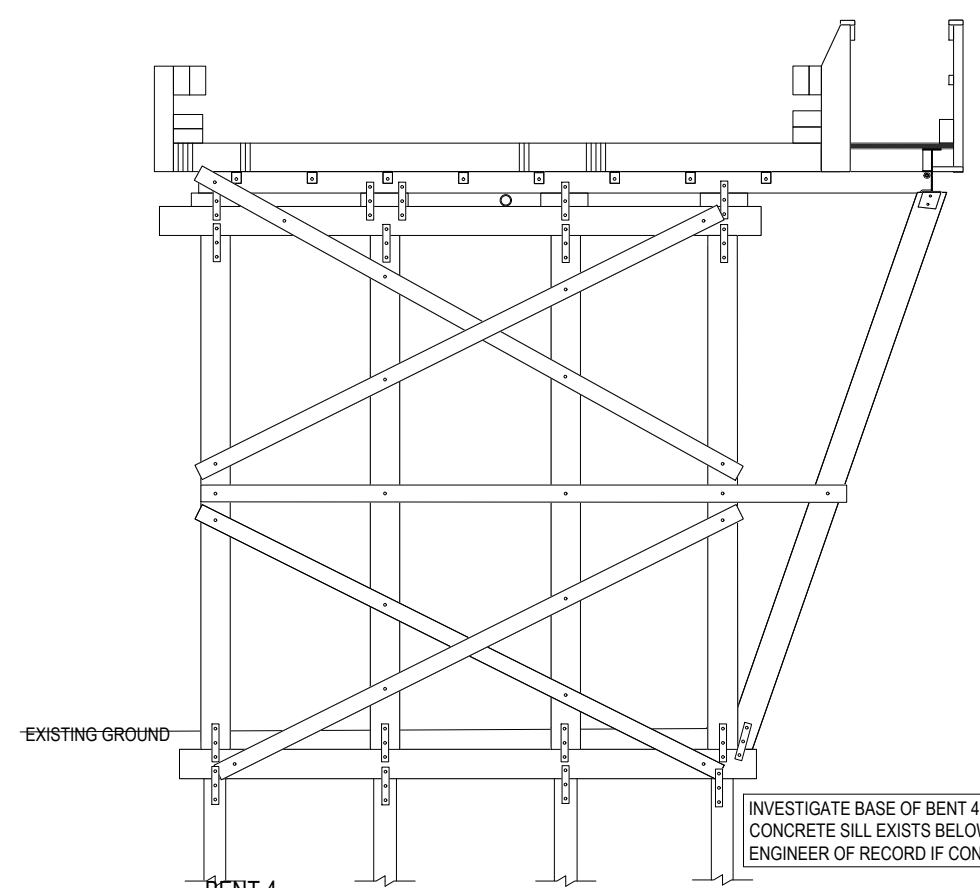
BENT 1
SCALE = 1:100



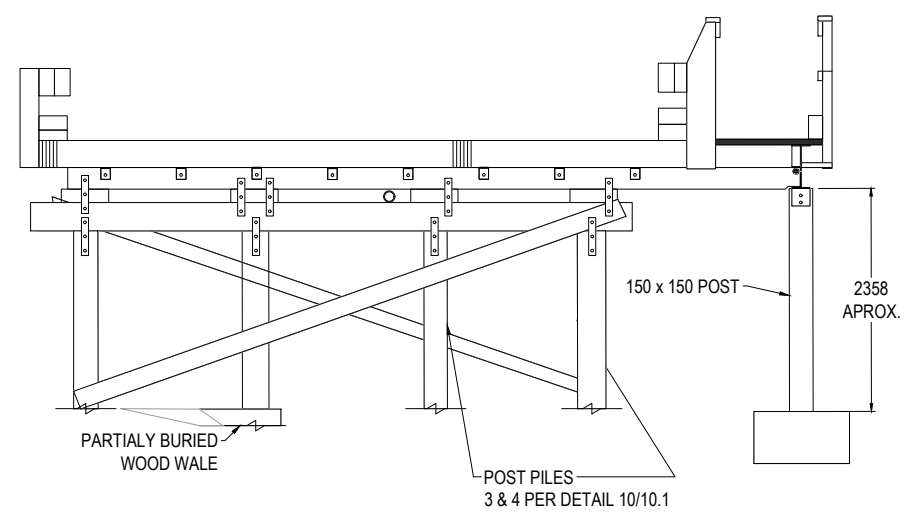
BENT 2
SCALE = 1:100



BENT 3
SCALE = 1:80



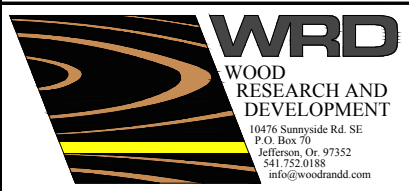
BENT 4
SCALE = 1:100



BENT 5
SCALE = 1:80

REARRANGED ALL BENT CROSS BRACES TO CREATE X PATTERN INSTEAD OF DIRECTIONAL BRACING

Z:\1xxx series - TRS\NISC - Nillumbik Shire Council\1412 - Diamond Street Bridge\CAD drawings\Diamond Street 16 MAY 2016.dwg, 2.1 - 5/18/2016 3:56:37 PM, ANSI Legend B (11.00 x 17.00 inches), Wood Research and Development



DRAFT
DAN TINGLEY
RPEQ #11561
NOT FOR CONSTRUCTION

PREPARED FOR:
NILLUMBIK SHIRE COUNCIL
ADDRESS: CIVIC DRIVE
PO BOX 476
GREENSBOROUGH, VIC. 3088
PHONE:
FAX:

DIAMOND STREET BRIDGE

REVISION DESCRIPTION	DATE	DESIGNED BY	CHECKED BY	APPROVED BY
△	04/12/2016	JRE	CC	aaa
△				
△				
△				

REASON FOR CHANGE	DATE	DESIGNED BY	CHECKED BY	APPROVED BY

ALL DIMENSIONS ARE METRIC (MILLIMETER OR METER) UNLESS OTHERWISE STATED

BENT SECTIONS FOR OPTION 2

DRAWING #
2.1

SHEET #
8 OF 14

PROJECT #1412